

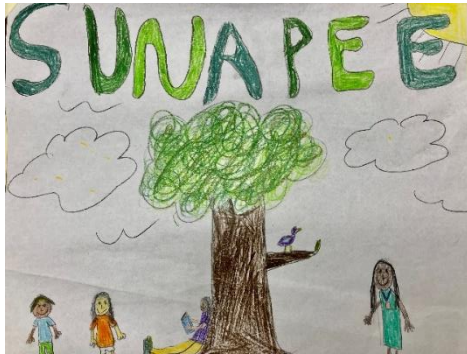
**ANNUAL REPORT**  
**For the year ending**  
**JUNE 30, 2022**



**Arianna Garceau, SMHS**



**Charlie Gallant, SMHS**



**Emma Berube, SCES**



**Kinley Spear, SCES**

**SCHOOL DISTRICT VOTING & ELECTION DAY**

**Tuesday, March 14, 2023**

**8:00 AM – 7:00 PM**

**DW SHERBURNE GYMNASIUM**

# Life at SCES



# Table of Contents

Achievements .....	2
Mission Statement .....	3
Dedication .....	4
Strategic Goals .....	5
School Board Chair Report .....	6
Superintendent’s Report .....	7
Elementary Principal Report .....	9
Middle High Principal Report .....	11
Student Services Report .....	13
Elementary School Personnel .....	15
Middle High School Personnel .....	16
School District Staff .....	17
School District Student Enrollment .....	19
Elementary School Clubs & Activities .....	20
Middle High School Activities & Sports .....	21
2022 School District Meeting Minutes .....	22
2023 Warrant Articles .....	29
2023—2024 Budget .....	31
School District Revenue .....	38
2023-2024 Default Budget .....	39
Special Education Expenditures / Revenue .....	40
Auditor’s Report .....	41



Natalya Fulton, SCES

Kindergarten, SCES



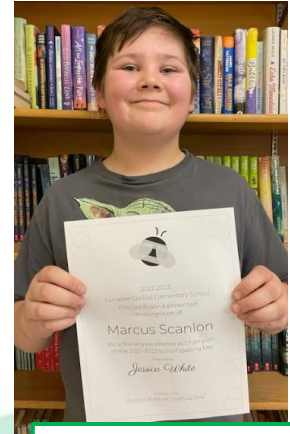
# ACHIEVEMENTS



SMHS New London  
Rotary Scholarship  
Winners



National Honor  
Society Inductees



SCES Spelling Bee  
Champion  
Marcus Scanlon

Teen Writers Competition  
Annaliese Rowell, 1<sup>st</sup> Place Fiction  
Jenna Caron, 1<sup>st</sup> Place Non-Fiction



Dylan Smith &  
Olivia Scheele  
NELMS



SMHS Boys Alpine Ski  
Team State Division  
Runners Up



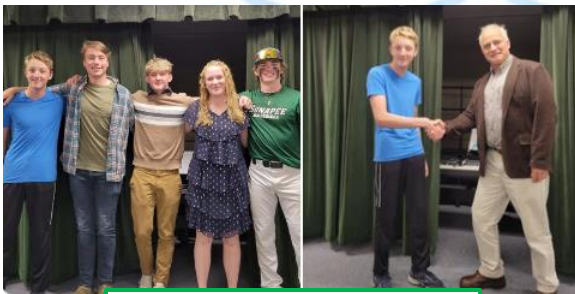
SMHS Brynn Smith  
NH Sports Page Player  
of the Week



Amanda Hughlock,  
SCES  
NHASEA Emerging  
Leader of Special  
Education



SMHS Spelling Bee  
Tibbetts Bilodeau, 1<sup>st</sup> Place  
Ben Russell, 2<sup>nd</sup> Place



SMHS Bartlett Prize  
Speaking





# **SUNAPEE SCHOOL DISTRICT**

## **2022 Annual Report**

### **Sunapee School Board Members**

Jesse Tyler, Chair – 2023

Scott Ritzmann, Vice Chair – 2024

Edward Andersen – 2023

Kelli McCaul Claus – 2025

Andrew Nichols – 2025

### **Mission Statement**

“The mission of the Sunapee School District is to prepare students to be life-long learners and contributing members of society by maintaining a challenging educational program in a safe environment.”

**Maintaining the High Expectations of the  
Sunapee Community for  
Our Children**

# DEDICATION

February 15th, the day we lost Mr. Royce; a day that changed Sunapee schools and the many people who loved him. Mr. Royce was Sunapee. He was the first one out on Field Day helping Mrs. Cruz set up for an amazing day. He helped with Nature's classroom, winter activities, along with greeting students with a, "Hey, Bud!" and providing rewards for those who earned them during the school day. Spending extra time with Mr. Royce was the highlight of their day. No matter how busy, he always made time!

Mr. Royce brought his love of the outdoors to the classroom. He shared his passion by bringing in the many artifacts he collected while out on his hunts and hikes. You could feel his enthusiasm while watching him teach the children all about the great outdoors. He loved sharing his knowledge with them, and the kids loved learning from him. It was contagious.

I remember reading a quote somewhere that said, "We make a living by what we get; we make a life by what we give!" If this is true, then Bill made a great life. He was the most giving person I've ever known. This couldn't have been more evident when Bill was nominated and named NH Southwest Region Champion for Children in 2020, and half the town of Sunapee came out to cheer him on at the parade that was given to honor him.

Bill had such an impact on all of us. He showed us that no matter how hard life can be, we must all learn from it every day and embrace every moment of it. Sunapee lost a piece of itself on February 15th. We can only hope to always live by the mantra of, "What would Bill Do?"

-Louise Nichols, On behalf of the SCES Staff

## William Royce



## Kathryn Ward



Kathy Quinlan Ward has been an institution in the Sunapee School District for more than 20 years. Kathy was a longtime resident of Sunapee, where she grew up with her family and attended the Sunapee schools. She started her career in Sunapee as the administrative assistant at Sunapee Central Elementary School. Later on, when the district broke away from SAU 43 to form SAU 85, she became the administrative assistant to the superintendent.

Kathy's personality and charm could be felt when you entered the SAU office and her style and professionalism helped foster enjoyment of the building. She was our historian and knew most, if not everyone, who entered the front door and welcomed everyone as if they were a lifelong friend. Kathy formed strong relationships with our faculty, staff and student body. She was actively engaged in our school community and attended sporting events, senior project nights, art shows and music performances.

We will miss Kathy's warm smile, but wish her well in the next phase of her life. Thank you, Kathy, for all you have given to Sunapee.



## Jack "Ike" Iacopino

"Ike" as everybody knows him, is a true gentleman who is affectionately known for his kind nature, willingness to work for and with students to help them meet their goals, and his inquisitive manner. Ike has as many questions for you, as he has Physics answers, always looking to learn more about the person seated at the desk. The word that probably best describes Ike is genuine. In that way each student has a true connection with Ike. As Jack retires this school year he leaves behind him an amazing legacy. It's hard to imagine the physical science lab without Ike there. Students often come to the lab during study hall, or before and after school. His lab is a place to finish homework or write up a conclusion, but also a place to enjoy the company of others, to feed the fish, store a lunch, tell stories, make a best ice-out guess, tune skis, jam to morning tunes, discuss weather, describe fishing holes, brag of ski adventures, and a place to dream up fall rosters. One might even catch a World Cup soccer game every couple of years! Outside of the classroom Ike has been a long standing, Hall of Fame soccer coach, and a legendary leader on the alpine ski slopes. His alumni flock back to his practices to assist, they hold him in the highest regard, and his current athletes aim to please him because of who he is. We will never be able to replace Ike. Thank you, Ike, for 27 years of service to the Sunapee schools and larger Sunapee community.

# SUNAPEE SCHOOL BOARD STRATEGIC PLAN GOALS 2021-2022



**Goal 1:** The Sunapee School District will provide a rigorous and diverse academic program that promotes high student achievement through an innovative curriculum that is evaluated and adapted to ensure optimum student growth.

**Goal 2:** The Sunapee School District will sustain and expand a welcoming culture focused on cooperation and collaboration, healthy competition, respect for individuality, open communication and support among the school and community, and a positive and inclusive social learning environment.

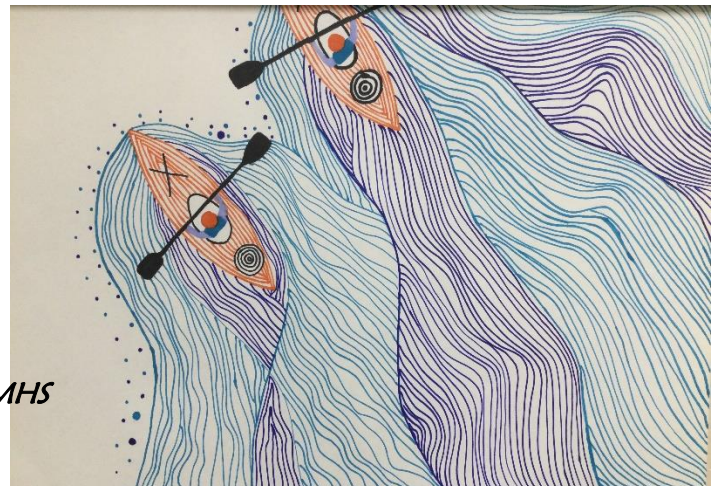
**Goal 3:** The Sunapee School District will expand authentic, flexible, innovative instruction and curriculum. We will provide opportunities that honor the strengths and address the challenges of all students to optimize their educational success.

**Goal 4:** The Sunapee School District will provide academic and co-curricular schedules that balance the needs of students, teachers, and families.

**Goal 5:** The Sunapee School District, in order to foster a culture of growth and to ensure best instructional practices for all students, will promote high quality, continuity, and effectiveness of faculty and staff through comprehensive recruitment, responsive staff development, and authentic evaluation.

*The Strategic Plan includes 36 action statements within and 32 have been successfully met. Our new strategic plan is currently in the development process.*

*Summer Gosselin, SMHS*



# **SCHOOL BOARD'S MESSAGE TO OUR COMMUNITY**

---

The resilience and adaptability of the Sunapee School community is inspiring. Through a long list of CV19 impacts that have factored into increased demand on school services for mental health and wellness, behavior, support services, the Sunapee Schools spirit and focus on care and learning has not wavered. There have been some remarkable accomplishments and deserved celebrations.

2022 included significant improvements in the safety, ventilation and other issues at the Sunapee Central Elementary School (SCES) that had been a topic of discussion for decades in town. Action was taken. Despite global supply chain issues presenting significant impacts to most capital projects, the voter approved renovation of SCES remained on budget, almost on time. A delay in components for the wood chip boiler has been the only significant schedule impact. Despite the delay, the ventilation and heating is working well in the school. A significant improvement that includes fresh air and consistent heat for the first time in the school's long history. The switch to the paired high efficiency propane furnace is delivering on reduced energy consumption, which will improve further when the wood pellets section is operating.

We are thankful to our generous community for the ongoing support of our schools that continue to be the heart of our town.

Respectfully Submitted,  
Jesse Tyler



***SMHS Baseball team member making a superb catch!***





## **SUPERINTENDENT'S MESSAGE TO THE COMMUNITY**

The Sunapee School District continues to provide a top level of public education to its students. Sunapee provides a variety of educational opportunities for all students that is noteworthy for its size. Our academic offerings in the middle and high schools allow for our students to develop the key skills to pursue any post-secondary opportunity of interest. Our extracurricular activities allow all students to explore a passion, talent or curiosity they may want to know more about. At our elementary school, our small class size allows teachers to work closely with each child's unique learning style. The elementary school continues to achieve proficiency levels at or above state averages. This year's focus at SCES is on our new math curriculum and rethinking the best blended approach to reading. Our faculty and staff are continually looking for new and interesting opportunities for our students inside and outside of the classrooms. This year, at SMHS we introduced an Advanced Placement Computer class, which is available to all students in grades 9-12. Our Community STEAM class has become one of our more popular programs for students in addition to our digital art class. Students seem to enjoy the creativity of utilizing technology to develop or create a product.

Over the last few years most of our students have dealt with changes to their daily lives. Most were able to navigate these changes, adapt, and continue to move forward, but a growing population of students are struggling with anxiety, interpersonal skills, time management and an overall level of dysregulation in their lives. Statistically, our student population has had an increase in feelings of negativity and self-harm.

As a public school district, our primary responsibility is to provide the educational opportunity for each student to grow and develop cognitively, socially, emotionally and behaviorally. We know that if a student's emotional, social and behavioral functions are not developing in sync, there will be interference in the child's ability to cognitively grow. We have some great student supports already in our schools, and we have continued to better prepare all our teachers with strategies to help each student develop in all four function domains. With the addition of our adjustment counselor and other guidance support personnel, we have a trained team of specialists who are able to assist all students when needed.

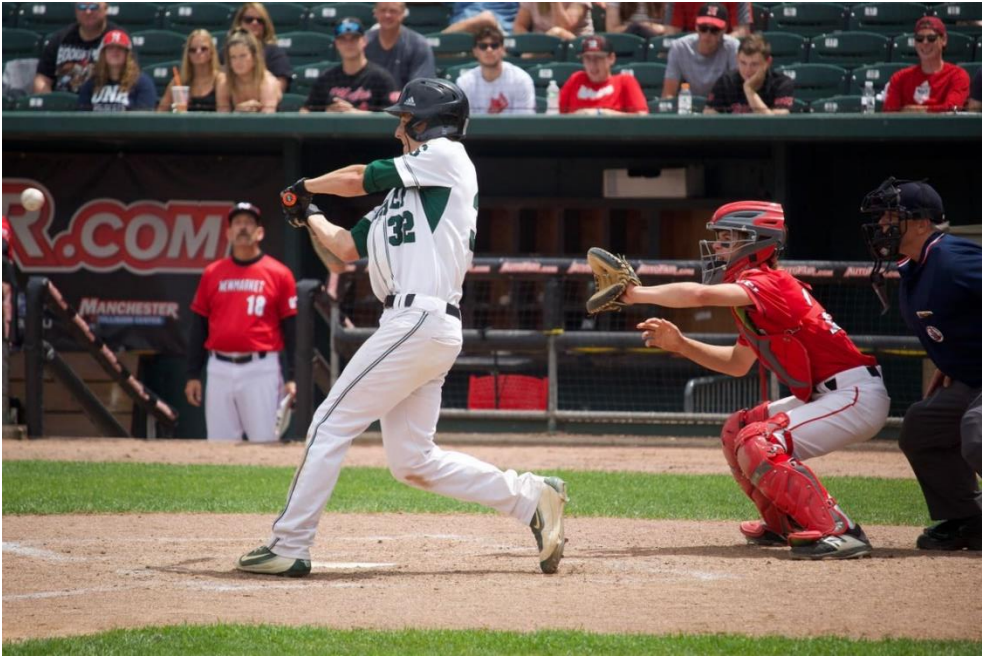
As our community continued to grow and change over the last five to ten years, our families and students were faced with many different challenges. We have had an increase in our free and reduced lunch population from 14% in 2017 to 20% in 2021. We have seen an increase in families who are homeless, living with grandparents, or facing food insecurity. Unfortunately, these circumstances can cause a disruption for the children involved. When students and families are experiencing some of these issues, our team works to help meet the basic needs of these families. As a community, we have some strong supports in place for families, but we need to be mindful that our community's needs continue to change.

Over the last five years, the district worked to complete its strategic plan, and we are pleased to report that we have achieved five goals and made further progress on the four continuous goals that address capital improvements, technology, budgeting and safety. The plan also included 36 action statements within it, and 32 have been successfully met. In January of 2023, the district invited a group of parents, teachers, administrators and school board members to take part in a SWOT (Strengths, Weakness, Opportunities and Threats) assessment. The information gathered in this initial process will be used to develop our next strategic plan for the next 18-24 months. During this process, several goals came to light, including: engaging our parents, improvements to facilities, continuing to strengthen our teaching staff, enhancing our curriculum, and ensuring all students have the programs needed to be successful within our schools.

While working in Sunapee for the past 11 years, I have seen our district continue to grow, our teachers continue to challenge and develop students and our students continue to demonstrate many unique abilities and strengths. In Sunapee, our public school is thriving, serving the vast majority of the children in town. I encourage all families to reach out to the school and speak with the teachers and administrators about both the positives and challenges each family or child may be experiencing. Through respectful communication, we can work together to move our students and community forward.

Sincerely,

Russell E. Holden





## **SUNAPEE CENTRAL ELEMENTARY SCHOOL PRINCIPAL'S ANNUAL REPORT**

The families and staff of Sunapee Central Elementary School started the 2021-2022 school year faced with the unknowns related to the ongoing pandemic and uncertainty surrounding their school building. The year brought up additional challenges as the community searched for a new principal and eagerly prepared for building renovations. Regardless of these hurdles, the community maintained its mission to prepare life-long learners through a challenging and safe educational system.

In March 2022, the Sunapee community graciously supported the raising and appropriation of \$5,697,645 to acquire and install energy saving equipment at Sunapee Central Elementary School. This improvement included HVAC systems and control, biomass boilers, a portable modular classroom, and electrical systems which all address health and safety aspects within Sunapee Central Elementary School. We thank the community for their continued support as we undertake these critical aspects of operations.

Our teachers continued to consider how their instructional practices promote rigor. Kindergarten through fifth grade teachers analyzed mathematics curriculum and selected the iReady Mathematics Classroom designed by Curriculum Associates. This curriculum nurtures student-friendly core instruction through an inquiry-driven process and, through the iReady Diagnostic, allows teachers to have detailed data to help provide meaningful instruction for all students. This program will be implemented in August 2022 with ongoing professional development through the 2022-2023 school year.



Along with our rigorous curriculum, we provided a variety of extension activities to our students. We hosted our annual Spelling Bee and Prize Speaking competition. Our fourth grade students presented a weekly word to support vocabulary development. The Friends of the Abbott Library hosted acclaimed author Peter Brown for a visit with our students and provided summer reading materials to our students. We continue to find ways to extend our students' learning beyond the classroom.

The staff recognizes the social and emotional impact that the pandemic has had on our students. A group has been collaboratively engaged in conversations around social and emotional learning at Sunapee Central Elementary School. We look forward to continuing these conversations during the 2022-2023 school year.

The pandemic continued to have an impact on Sunapee Central Elementary School traditions. There was the return of Back-to-School Night and Field Day. We will continue to review and reimagine the return of traditional events into the 2022-2023 school year, and we look forward to hosting concerts, the Winter Activities Program, and other school-wide events.

Thank you to the Sunapee Parent Teacher Organization (SPTO) for their continued support. This dedicated group of parents and teachers typically hosts many fundraisers throughout the year that fund programming above-and-beyond that which the budget provides. They piloted a successful lottery card fundraiser that raised more than \$11,000! They sponsored our animal encounter assembly in the spring and cosponsored, with the Abbott Library, the summer book giveaway for our students. The SPTO meets in the Sunapee Central Elementary School Library on the second Wednesday of each month at 6:30pm. For more information, please contact [sptoprez@sunapeeschools.org](mailto:sptoprez@sunapeeschools.org).

We ended the school year saying goodbye to a few staff members and we will be welcoming new faces for the 2022-2023 school year. We must wish a happy and well-earned retirement to Pam Larpenter, Jo Skarin, Barb Lague, and Loretta Dewey. We thank them for their years of dedicated service to Sunapee and its students.

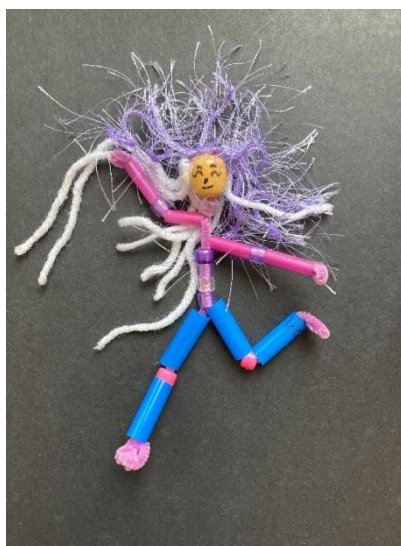
We, also, must say goodbye to Brittany Valentine and Walter Huston, who are moving on in their personal and professional lives. We have hired dedicated and capable educators to join our staff, including Kelsey Pitkin (Kindergarten), Jenna Darling (First Grade), Alex Ager (Music), Monique Fong (Physical Therapist), and Ryanna Burbach (paraeducator). We consider ourselves fortunate to have dynamic educators who can take on new challenges. Olivia VanDenBerg and Kathy Scott will collaboratively complement each other as our second grade team. Additionally, we have hired Jenn Kelleher as a Special Educator, Rachel Gregoire as our Speech and Language Pathologist, Jessica White as our Literacy Specialist, and Joel Rechisky as a paraeducator. We look forward to seeing the abilities and talents of our newest additions and those in new roles.

On July 1, 2022, I began my tenure as principal of Sunapee Central Elementary School. I grew up in New York and studied at The College of Saint Rose in Albany, NY for a Bachelor of Arts in Music and Masters of Science in Childhood and Special Education. I relocated to Vermont where I had the pleasure of serving as both a classroom teacher and Special Educator. During this time, I discovered my passion in instructional leadership and pursued a Master of Arts in Educational Leadership through Castleton University. I then sought my first principal-ship in Sunapee because of our shared value of preparing students to be life-long learners. I reside in Hartford, Vermont with my wife, two young kids, and tiny dog. I am excited to continue learning about all Sunapee has to offer.

Thank you

Sincerely,

Patrick R. Gordon  
Principal





## **SUNAPEE MIDDLE/HIGH SCHOOL PRINCIPAL'S REPORT**

### **Introduction**

The 2021/2022 school year allowed students at SMHS to return to a greater deal of normalcy as class sizes returned to full sizes, field trips were allowed to take place, open houses were able to accommodate parents, and indoor co-curricular activities were able to have full access for spectators. SMHS continues to offer a wide variety of co-curricular opportunities for the students, and over 70% of the student body accesses at least one of these offerings. Sunapee Middle/High School completed its re-accreditation process through the New England Association of Schools and Colleges which visited the school between October 24th and October 27th of 2021. The committee report was extraordinarily complementary of the students, staff, and community of Sunapee as they recognized the learning culture, student learning, professional practices, and learning supports and resources of the school. For the fourth year in a row, Sunapee Middle High School was recognized as one of the top ten secondary schools in the state of New Hampshire by U.S. News and World Report's annual ranking of excellent high schools.

### **Instructional Programming**

Sunapee Middle/High School continues to provide students with a wide variety of college preparatory, advanced placement, and STEAM (science, technology, engineering, art, and mathematics) classes. Students at SMHS must earn a minimum of twenty-two credits to graduate which include:

- Four credits in English
- Four credits in mathematics
- Two credits in science which must include biology and a physical science
- Three credits in social studies (mandatory ½ credit economics, 1 credit U.S. history, ½ credit government.)
- One credit in both physical education and computer science
- One-half credit each in the fine arts and health
- Successful completion of a senior project

In addition to the heterogeneously grouped college preparatory offerings, Sunapee High School offers:

- Advanced Placement United States History
- Advanced Placement Calculus
- Advanced Placement Physics
- Advanced Placement English Literature and Composition
- Advanced Placement English Language and Composition
- Advanced Placement Computer Science
- Running Start courses which award college credits in statistics, citizenship and law, and English composition

- Access to Dartmouth College courses for qualified junior and senior students
- Access to Project Lead the Way engineering courses
- Access to the career and technical education opportunities at Sugar River Valley Regional Technical Centers in Newport and Claremont

After a hiatus from field trips during the 2020/2021 school year, sixth and seventh graders were able to attend Nature’s Classroom, 8th,9th, and 10th graders were able to visit Harpers Ferry and Gettysburg, and 11th and 12th graders were able to attend Close-Up in Washington D.C. The boys’ soccer and baseball teams won Division IV state championships during the 2021/2022 school year, and the boys alpine ski team was the state runner-up.

This past year’s junior SAT average was 1110 with a reading/writing average mean score of 551 and a math average mean score of 559. These overall average scores were ninety-four points higher on average than the state SAT average score of 1006.

The pandemic of previous years’ most significantly impacted proficiency rates of middle school students. While the lowest proficiency rates state-wide were in math, Sunapee Middle High School students had the same proficiency rate, 39%, as the state average in the 6th grade. In math, students were 67% proficient in the 7th grade compared to 37% state-wide, and 52% were proficient in the 8th grade compared to 33% state-wide. State-wide proficiency rates were higher in the English and language arts. The one segment that underperformed the state was the 6th grade with a 50% proficiency rate compared to the state average of 53%. In the 7th grade, 69% of SMHS students were proficient compared to 49% state-wide, and in the 8th grade, 59% were proficient compared to 46% state-wide. State-wide, the only middle school group tested in science was the 8th grade, and Sunapee students had a proficiency rate of 51% compared to a state proficiency rate of 33%.

### **Conclusion**

The students at Sunapee Middle/High School continue to do well academically and in co-curricular participation. A highlight of the 2021/2022 school year was the NEAS&C visit and accreditation report which is available on the district website. I would like to thank all of the community members, parents, students, and teachers who support our efforts at Sunapee Middle/High School and make it such a great place to work and learn. On behalf of the staff, I assure you that we do not take this support for granted, and we will continue to work diligently to meet the needs of all students and the community of Sunapee.

Respectfully Submitted,

Sean Moynihan  
Principal, Sunapee Middle/High School





## **Student Services Annual Report**

Student Support Services in Sunapee works in partnership with students, families, staff, and administrators to ensure that all students have the services which provide equitable and challenging educational opportunities in safe, healthy, caring, respectful, and supportive school environments. Student support services include Special Education, Nursing, 504, and ELL (English Language Learners). Despite our stable overall student population district wide, there has been an increase in the number of students requiring special education and other support services over the past three years.

At SCES we have seen an influx of students with a wide range of needs which have required us to look at our approaches and expand our repertoire of skills. Engage, Connect, Correct, has always been an important practice but is now critical in our work with all students. The team has worked to set up interventions which support all students when they are experiencing unexpected behaviors or unexpected reactions to otherwise typical circumstances.

This past summer, the school district worked collaboratively with the Abbott Library and Sunapee Town Recreation to provide an enrichment camp which was the venue for the school extended school year program. The camp focused on accessibility for all. We were able to provide a “typical” summer camp experience which included academic enrichment activities where students with disabilities could also receive their specially designed instruction and extended school year program. This program was a huge success as reported by both parents and staff.

Over the past year we have spent a significant amount of time working on transition planning at the Sunapee Middle High School. The purpose of transition planning is to help students figure out what they want to do after high school and then use that information to select courses, goals and services to assist the student in reaching those goals. Students become more engaged over time in this planning and are required to be invited to their IEP meetings helping to prepare them to be self-advocates. Transition plans are fluid and revisited at least annually as students explore and refine their areas of interest and goals for the future. This is a key component of the IEP process for high school students.

### ***Recent changes in legislation:***

On June 17<sup>th</sup> 2022, SB 394 was signed into law. This law changes the definition of a child with a disability under special education laws from students age 21 to age 22. This requires school districts to continue to provide services and programs to students between their 21<sup>st</sup> and 22<sup>nd</sup> birthday unless they have earned a regular high school diploma.

New Hampshire adopted legislation effective in August in which students with disabilities will get help registering to vote. The new law requires schools, parents, and students with disabilities who are 17 or older to discuss voter registration as part of their transition planning.

The Sunapee School District has high quality, dedicated professionals to work with all of our students, including those with learning differences. Sunapee Student Support Services will continue to work diligently to provide students and their families a positive and productive educational experience.

Sincerely,  
Terra Geer, M.Ed.  
Director of Student Services





## SUNAPEE CENTAL ELEMENTARY SCHOOL

<b>Name</b>	<b>Position</b>	<b>Education</b>	<b>Degree</b>	<b>Years in Education</b>	<b>Years in District</b>
<b>Gordon, Patrick</b>	<b>Principal</b>	<b>Castleton University</b>	<b>MA</b>	<b>11</b>	<b>2</b>
Ager, Alex	Music	Boston University	MA	5	1
Austin, Simone	Special Education	University of NH	M.Ed.	26	19
Blewitt, Katie	Grade 4	University of NH	M.Ed.	22	18
Butcher, Kathleen	School Nurse	University of NH	BA	13	2
Connell, Brianna	Special Education	Granite State College	MA	4	4
Cruz, Bonnie	Physical Education	Springfield College	MA	4	4
Darling, Jenna	Grade 1	University of NH	BA + 30	3	2
Denney, Kelsea	School Counselor	New England College	BA + 30	10	1
Doyle, Heidi	Library Media / Technology Integrator	Marlboro College	MAT	22	9
Hamel, Natasha	Guidance Counselor	Keene State College	M.Ed.	8	4
Hughlock, Amanda	PreSchool / Special Education	Colby-Sawyer College	M.Ed.	11	9
Jensen, Deborah	Title I	Colby-Sawyer College	BS	27	27
Keegan, Jacqueline	Kindergarten	University of Bridgeport	MA	28	21
Kelleher, Jennifer	Special Education	Keene State University	BA	16	7
Morse, Michelle	Grade 3	Syracuse University	MA	16	15
Nester, Emily	Grade 4	University of New York	MA	8	2
Nichols, Louise	Grade 1	Keene State College	BS	28	16
Pitkin, Kelsey	Kindergarten	Southern NH University	MA + 15	6	2
Scheele, Lesley	Grade 5	University of NH	MA	25	18
Scott, Kathryn	Grade 2	Antioch NE University	M.Ed.	27	7
Shepherd, Michele	Grade 3	Johnson State College	BA + 15	15	6
VanDenBerg, Mark	Grade 5	Plymouth State University	BA + 15	17	2
VanDenBerg, Olivia	Grade 2	Plymouth State University	BS	16	5
White, Jessica	Elementary Interventionist	Merrimack College	M.Ed.	12	10
Willis, Mary	Art	Plymouth State University	BA	16	16

## SUNAPEE MIDDLE HIGH SCHOOL

Name	Position	Education	Degree	Years in Education	Years in District
Moynihan, Sean	Principal	Keene State College	M.Ed.	31	19
Reed, Meagan	Assistant Principal / Social Studies	University No. Carolina	CAGS	26	26
Ager, Alex	Music	Boston University	MA	5	1
Baker, Brent	Science	St. Laurent University	BS + 30	27	27
Barton, Amanda	Mathematics	Keene State College	MA	14	10
Carleton, Benjamin	AI/Technology	Granite State College	BA	7	3
Christensen, Amanda	Literacy	Plymouth State University	M.Ed. + 15	26	19
Cloutier, Jennifer	Mathematics	New England College	BA + 30	11	10
Cooney, Myles	Guidance	University of NH	MA	25	19
Coverdale, Thomas	English	Plymouth State University	M.Ed.	36	21
Flint, Katherine	English	Plymouth State University	M.Ed.	12	12
Franta, Bart	Spanish	St. John's University	MA + 30	35	3
Frederick, Thomas	Athletic Director	Springfield College	M.Ed.	33	16
Garvin, Candice	School Nurse	New England College	BS	33	2
Hubert, Stephanie	Special Education	New England College	M.Ed.	27	23
Iacopino, Jack	Science	University of NH	BS + 15	27	27
Klingerman, Alexander	Social Studies	New England College	M.Ed.	18	9
Krause, Alyssa	Physical Education / Health	New England College	BA	6	3
Levasseur, Corinne	Grade 6	Keene State College	BS	29	29
MacNamee, Scott	English	St. Lawrence University	M.Ed.	12	4
McDonald, James	Computer Science	Washington State University	BA	13	7
Palin, Raymond	Library	Florida State University	MS/MA	30	15
Parsons, Sharon	Grade 6	Anna Maria College	MA	38	18
Planz, Taylor	Science	University of NH	MA + 15	10	3
Prew, Robin	Special Education / Life Skills	Granite State College	BS + 15	13	5
Romein, Kirk	Art	Plymouth State University	BS	22	8
Tyler, Barbara	Special Education	Wheaton College	BA	3	3
Vienneau, Danielle	Mathematics	University of NH	M.Ed. + 15	15	11
Watkins, Jacqueline	MS Guidance	Boston University	M.Ed.	17	9

## Sunapee School District Support Staff

Name	Position	Location
Bailey, Edward	Bus Driver	District
<b>Bouranis, Mathew</b>	<b>Facilities Director</b>	<b>District</b>
Clarke, Amy	Food Service	District
Daltorio, Joseph	Custodian	District
Davis, Corey	Custodian	District
<b>Fullerton, Robert</b>	<b>Food Service Director</b>	<b>District</b>
Gagne, Keith	Custodian	District
Hancock Kathleen	Bus Driver	District
Janas, Alex	Custodian	District
Mason, Jo Ann	Food Service	District
Merrill, Cathleen	Bus Driver	District
Mitchler, Robert	Paraeducator	District
Montambeault, David II	Lead Custodian	District
Patten, Thomas	Bus Driver	District
Rechisky, Joel	Custodian	District
<b>Thomas, Brenda</b>	<b>Transport Director</b>	<b>District</b>
Tijaro, Gloria	Bus Driver	District
<b>Administrative Assistants</b>		
Ameigh, Lisa	Administrative Assistant	SMHS
Dodge, Darlene	Registrar	SMHS
Gross, Caroline	Administrative Assistant	SCES
Morse, Darlene	Administrative Assistant	SMHS
Ricketts, Peggy	Library Administrative Assistant	SMHS



## Sunapee School District Paraeducators

Name	Position	Location
Apley, Gail	Paraeducator	SCES
Bowen, Elizabeth	Paraeducator	SCES
Burback, Ryanna	Paraeducator	SCES
Cain, Janet	Paraeducator	SMHS
Conners, Alexandra	Paraeducator	SMHS
Dalton, Norman	Paraeducator	SMHS
Emery, Hayley	Paraeducator	SMHS
Gallup, Ruth	Paraeducator	SCES
Gannett, Valerie	Paraeducator	SCES
Godin, Tracey	Study Hall Proctor	SMHS
Grant, Hannah	Paraeducator	SCES
Lacaillade, Samantha	Paraeducator/MA	SCES
Mitchler, Robert	Paraeducator	District
Rechisky, Joel	Paraeducator	District
Walsh, James	Paraeducator	SMHS
Williams, Sarah	Paraeducator	SMHS
<b>District Certified Support Staff</b>		
Fong, Monique	Physical Therapist	District
Glass, Adam	Technology Support	District
Gregoire, Rachel	Autism Specialist/SLP	SCES
Lamontagne, Cindy	Adjustment Counselor	District
Murray, Adah	School Psychologist	District
Olin, Sandra	OT	District
Reed, Jonathan	Technology Director	District
Whipple, Jessica	OT	District
<b>SAU Staff</b>		
<b>Holden, Russell</b>	<b>Superintendent</b>	<b>SAU</b>
Esposito-Flynn, Michele	Assistant to the Superintendent	SAU
<b>Wessells, Kelly</b>	<b>Business Administrator</b>	<b>SAU</b>
Laramie, Beth	Financial Assistant	SAU
<b>Geer-vonKanneurff, Terra</b>	<b>Dir. Student Services</b>	<b>SAU</b>
Young, Donna	Special Education Administrative Assistant	SAU

**Sunapee School District  
Enrollment Report  
By School  
As of October 1, 2022**

**Sunapee Central Elementary School:** **Total**  
**181**

<u><b>Grade</b></u>	<u><b>Student #</b></u>
<b>Pre-School</b>	<b>22</b>
<b>Kindergarten</b>	<b>29</b>
<b>Grade 1</b>	<b>20</b>
<b>Grade 2</b>	<b>27</b>
<b>Grade 3</b>	<b>25</b>
<b>Grade 4</b>	<b>31</b>
<b>Grade 5</b>	<b>27</b>

**Sunapee Middle High School:** **Total**  
**217**

<u><b>Grade</b></u>	<u><b>Student #</b></u>
<b>Grade 6</b>	<b>35</b>
<b>Grade 7</b>	<b>19</b>
<b>Grade 8</b>	<b>31</b>
<b>Grade 9</b>	<b>33</b>
<b>Grade 10</b>	<b>33</b>
<b>Grade 11</b>	<b>33</b>
<b>Grade 12</b>	<b>35</b>

**Total District Enrollment:** **400**

# SUNAPEE CENTRAL ELEMENTARY SCHOOL

## CLUBS & ACTIVITIES

### Clubs & Activities

Bartlett Prize Speaking

Book Breakfasts

Cardboard Challenge

Chess Club

DARE Program for 5<sup>th</sup> Grade

Field Day

Field Trips

Grade 5 Band

Halloween Cereal Drive

Jingle Bell Blitz

Jump Rope for Hearts

Kindness Week

Memorial Day Celebration

Scripps Spelling Bee

Student Art Showcase

Town Offices Holiday Decorating

Valentine Boxes for Seniors

Winter Activities Program

Yearbook



# SUNAPEE MIDDLE HIGH SCHOOL

## SPORTS & ACTIVITIES

### Clubs & Activities

Art Club  
Beekeeping Club  
Book Club  
Chess Club  
Close-Up  
Destination Imagination

Drama Club / Plays  
Folio  
Gay/Straight Alliance  
Harvard Model Congress  
National Honor Society

Outing Club  
Prize Speaking  
Service Club  
Spelling Bee (Middle School)  
Student Council  
Yearbook Club



### Interscholastic Sports

**FALL**  
Bass Fishing  
Golf  
Soccer  
Volleyball

**WINTER**  
Basketball  
Alpine Skiing  
Cross Country Skiing  
Swimming

**SPRING**  
Baseball  
Softball  
Track & Field

# SUNAPEE SCHOOL DISTRICT WARRANTS

2022-2023

## MINUTES FROM DELIBERATIVE SESSION

To the inhabitants of the School District of the Town of Sunapee qualified to vote upon District affairs:

You are hereby notified to meet at the Sunapee Middle High School Gymnasium and Classrooms located on 10 North Rd in said Sunapee, New Hampshire on Monday, February 7, 2022 at 6PM for the first session of the Annual School District Meeting to deliberate upon the articles, and to meet again at the David W. Sherburne Gymnasium located on Route 11 in said Sunapee, New Hampshire on Tuesday, March 8, 2022 between the hours of 8AM and 7PM for the second session of the Annual School District Meeting to vote by ballot upon the following articles:

Moderator Aaron Simpson called the meeting to order at 6 PM, made a date clarification (voting session is March 8 and not March 10), and reviewed the mask policy for the meeting. The Pledge of Allegiance was led by Jesse Tyler and recited by the School Board and those in attendance.

1. To choose a clerk, treasurer, and moderator for one-year terms, and two members of the School Board for the ensuing three years.

**The polls were open on March 8, 2022 from 8:00 AM- 7:00 PM. The following votes were cast:**

**\*Denotes winner**

### **School Moderator**

#### **School Board**

John Augustine	478 Votes	3 Year Term
Kerri McCaul Claus*	518 Votes	3 Year Term
Andrew Nichols*	559 Votes	3 Year Term
Laura Piazza	422 Votes	3 Year Term
Adrienne Scott	153 Votes	3 Year Term

### **School Clerk**

### **School Treasurer**

Moderator Simpson moved Article 1 to the ballot.



2. To hear reports of agents, auditors and committees or officers heretofore chosen.

Moderator Simpson moved Article 2 to the ballot.

3. Shall the District raise and appropriate the sum of \$11,631,438 (gross budget) to design, construct, furnish, and equip a renovation and addition to Sunapee Central Elementary School and its associated buildings and grounds facilities, which shall be funded with \$ 10,833,507 of bonds or notes, \$270,000 biomass credits from the NH Public Utilities Commission, and \$527,931 in federal grant funds; and authorize the issuance of \$ 10,833,507 of bonds or notes in accordance with the provisions of the Municipal Finance Act (RSA Chapter 33); and authorize the School Board to issue and negotiate such bonds or notes and determine the dates, maturities, interest rates, and other details of such bonds or notes; and raise and appropriate an additional sum of \$270,838 from taxation for debt service payments due on such bonds or notes during the 2022-2023 fiscal year; and authorize the School Board to accept on behalf of the District any federal, state, or private funds that may become available with respect to the project? (3/5 majority vote required)

(The School Board Recommends Approval)      (Estimated. Tax Impact: \$ .18)

Andy Nichols made a motion to move to the ballot. Kerri Claus gave the second. Andy Nichols then addressed the article. He stated the following: This is a long overdue project in town. We've been trying to figure out the right solution for a while now. This project addresses fire and safety, ADA, mechanical ventilation system, site safety and traffic flow. It keeps the kids safer, provides a secure vestibule, more insulation. A \$270,000 biomass grant which will help offset the cost of the new heating system, which will also supply heat to the Sherburne Gym. Another \$530,000 in grant money needs to be used on ventilation. How can this be a 50 year solution? What we mean is that this is a 50 year solution for the building. We've ignored it long enough.

Arlene Adams asked someone to explain the first-year tax impact of .18 cents. Andy Nichols clarified that the .18 cents is for the first year. Arlene Adams then questioned the safety of the area with trucks delivering the pellets where the playground would be. Andy Nichols stated that traffic would not be anywhere near the playground area. John Augustine questioned the report that has projected enrollment report is from 2020. He asked if the board felt comfortable making a decision with old data. Andy Nichols addressed the question by saying that the board did feel comfortable because the data has been accurate in prior years. John Augustine then asked for clarification on classroom size and how that is set, any energy efficiencies with the new building. Mike Jewczyn asked for clarification around the \$252 on a \$300,000 tax impact. Carol Wallace asked about the value added by tuition students that the renovated school may bring into the town. Superintendent Holden responded that there is now a set tuition agreement in place. Carol then stated that children currently in the school deserve a safe and adequate school with good ventilation. She reiterated that the school board has spent countless hours developing a plan, and it's time we as a town support this warrant article. Kirk Bishop

shared some thoughts and his support of Article 3, stating “there is excellence, and maybe even magic, that happens in our Sunapee classrooms. This is about giving our kids and grandkids as well as our teachers a safe place to teach and learn.” Don Bettencourt asked about the improved learning that could be expected from this school proposal. Jesse Tyler and Andy Nichols – the better ventilation we have in our schools, and the more we can keep our kids in the classroom, the more the kids are going to be able to learn. Kerri Claus added that it is difficult to learn in the stairwells and closets that we are currently using for learning spaces. Sunapee is already an excellent school system. Don Bettencourt then asked if we could build an elementary school anywhere, is the current location where we would build it? Andy Nichols, Edward Andersen, Scott Ritzmann and Jesse Tyler responded saying that “the Board looked at many options, and the one campus solution did not seem like something the town wanted to support. This is the most cost-effective solution. The Board took into account the cost, and the community feedback for building a brand-new school versus renovating the existing elementary school.” Charlene Osborne asked about the parking lot and the playground and also school drop off and pick up. Peter Hookstruff spoke in support of Article 3 and said that the tour he took of SCES and the lack of ventilation was a big part of his decision to support. Louise Nichols spoke about the aging modulars and how difficult it is to teach in the elementary school children who are trying to learn in sometimes deplorable conditions. Jan Bettencourt had a question about the design and the capacity of the new elementary school. Superintendent Holden stated that capacity would be for 350-400 students once the renovation is done. Jan Bettencourt then asked if preschool was an economic venture that benefits Sunapee. Superintendent Holden said there are currently 25 students in the pre-K. For pre-K students that need services, we are able to provide education at a much lower cost in district than we would by sending those students to another district. Melissa Trow addressed the need for, and importance of, having a pre-K. Elizabeth Nichols spoke in support of Article 3. Skylar Hawthorn addressed the audience and spoke in favor of Article 3 and shared thoughts on the opportunities offered at Sunapee. Adrienne Scott spoke about her experience at Grantham without a preschool, and how difficult that was. She expressed her support of Article 3. Chris Whitehouse spoke out against Article 3 and the cost to educate a student in Sunapee. Jessica White spoke in support of Article 3 and hoped to address those that were on the fence about their support of the school. Christine Corey spoke and said she hoped that people with differing opinions could be respectful. Jessica Sarkisian spoke in support of Article 3. John Augustine spoke and asked why there is no fundraising effort in place. Andy Nichols addressed this and said that there is a fundraising effort underway. Jesse Tyler stated that we are responsible for providing education for our children, and if not in Sunapee, we will have to pay for it in another district. Mindy Atwood spoke as a former chair of fundraising for the Abbott Library. She stated that she didn’t fundraise for the library so that it could be weaponized to vote against this school project.

Moderator Simpson took a vote on the article - the ayes have it. Moderator moved Article 3 to the ballot.

Andy Nichols made a motion to restrict reconsideration. Second by Kerri Claus. Vote taken and ayes have it.

**YES 674      NO 554      *Failed (3/5 vote required)***

4. Shall the District raise and appropriate as an operating budget, not including appropriations by special warrant articles and other appropriations voted separately, the amounts set forth on the budget posted with the warrant, or as amended by vote of the first session, for the purposes set forth therein, totaling Thirteen Million, One Hundred Seventy-Six Thousand, Seven Hundred Eighty-Four Dollars (\$13,176,784)? Should this article be defeated, the default budget shall be Thirteen Million, One Hundred Seventy Eight Thousand Three Hundred Fifty-One Dollars (\$13,178,351), which is the same as last year, with certain adjustments required by previous action of the District or by law; or the governing body may hold one special meeting, in accordance with RSA 40:13, X and XVI, to take up the issue of a revised operating budget only?

(The School Board Recommends Approval)

(Estimated. Tax Impact: \$.11)

Jesse Tyler made motion to move Article 4 to the ballot. Scott Ritzmann provided the second. Scott Ritzmann stated that this article addresses the school budget for the next school year. Scott went over the specifics of the budget. It is a 1.5% increase from current budget. The tax impact is \$.11 per \$1,000. Scott thanked the entire school district – all administrative staff, maintenance staff, kitchen staff, teachers, and everyone else associated with the school.

John Augustine asked about the cost and the process involved to tuition in students. Superintendent Holden went over the process, which involves discussions between the principals of each school, and a determination is made. For 9th-12th graders to attend Sunapee is \$15,500 and for students in K-8 it is \$14,000. John Augustine then spoke about the 75% tuition discount given to teachers who live out of district and have children attending Sunapee schools. Jesse Tyler and Scott Ritzmann then discussed why that discount is in place. Carol Wallace thanked the school board and our teachers who make our schools so great.

Moderator Simpson took a vote on the article - the ayes have it. Moderator moved Article 4 to the ballot.

Motion to restrict reconsideration made by Jesse Tyler, second by Scott Ritzmann. Vote taken and ayes have it.

**YES 866      NO 334      *Passed***

5. Shall the District approve the cost items included in the collective bargaining agreement reached between the Sunapee School Board and the Sunapee Teachers Association, which calls for the following increases and benefits at current staffing levels totaling:

Account	2022-23	2023-24	2024-25
Salaries & Taxes	\$151,650	\$ 174,235	\$187,217
Extracurricular	\$5,380		
Health Ins. Savings	\$-26,575		
<b>Total</b>	<b>\$ 130,455</b>	<b>\$174,235</b>	<b>\$ 187,217</b>

And further raise and appropriate the sum of One Hundred Thirty Thousand, Four Hundred, Fifty- Five Dollars (\$130,455) for the 2022-2023 fiscal year, such sum represents the additional costs attributable to the increase in salaries and benefits contained within the bargaining agreement over those that would be paid at current staffing levels. The costs for the years of the agreement beyond the upcoming 2022-2023 fiscal year will be included in the operating budget proposal each of those years.

(The School Board Recommends Approval)

(Estimated Tax Impact: \$.09)

Motion made by Edward Andersen to move Article 5 to the warrant. Second by Kerri Claus. Edward Andersen said through the negotiation process, he learned a lot about what the teachers in each of the schools have to deal with, and the many hats that they are wearing. Ed Andersen also went over the "step" process for teacher raises. Sunapee has 34 teachers in the district on the very top step. That means those teachers have been teaching here a long time. That is a huge benefit to the school. Don Bettencourt asked for a copy of the contract. Jesse Tyler said that the contract will be available after it is voted on. John Augustine asked about teacher insurance and the deductible associated with that. Melissa Mitchler spoke about the importance of keeping teachers. As an educator in Newport and new Sunapee resident, she talked about how teacher turnover costs districts money, caused distractions, causes lower graduation rates and fights in the hallways.

Moderator Simpson took a vote on the article - the ayes have it. Moderator moved Article 5 to the ballot.

Motion to restrict reconsideration made by Edward Andersen. Second by Kerri Claus. Vote taken and ayes have it.

**YES 691      NO 506      *Passed***

6. Shall the District, if Article 5 is defeated, authorize the Sunapee School Board to call one special meeting, at its option, to address Article 5 cost items only.

(The School Board Recommends Approval)

Edward Andersen stated that this Article 6 basically says that should Article 5 fail, this would allow negotiations with the teachers' union to continue in a special meeting.

There was a motion to move the question and seconded. Moderator Simpson took a vote on the article - the ayes have it. Moderator moved Article 6 to the ballot.

Edward Andersen made a motion to restrict reconsideration. Kerri Claus gave the second. Vote taken and ayes have it.

**YES 805      NO 370      *Passed***

7. If Article 3 fails, shall the District raise and appropriate the sum of \$5,697,645 (gross budget) to acquire and install energy savings equipment at Sunapee Central Elementary School, including HVAC systems and controls, biomass boilers, portable modular classrooms, and electrical systems, which shall be funded with a \$4,899,714 lease agreement, \$270,000 in biomass credits from the NH Public Utilities Commission, and \$527,931 in federal grant funds; and to enter into a \$4,899,714 lease agreement for approximately 10 years; and raise and appropriate an additional sum of \$549,471.32 from taxation for lease payments due during the 2022-2023 fiscal year? The annual lease payments will be approximately \$549,471. The lease agreement will contain an escape clause.

(The School Board Recommends Approval)

(Estimated Tax Impact \$.37)

Motion to move article 7 Kerri Claus. Second by Andy Nichols. Kerri Claus spoke about Article 7 being a plan B. This plan represents half the cost of article 3, but only addresses about 1/3 of the problems. This plan would also fix the heating system in the Sherburne Gym.

Moderator Simpson took a vote on the article - the ayes have it. Moderator moved Article 7 to the ballot.

Motion to restrict reconsideration by Kerri Claus, second by Andy Nichols. Vote taken and ayes have it.

**YES 628**

**NO 562**

***Passed***

8. Shall the District raise and appropriate the sum of Fifty Thousand Dollars (\$50,000): to be placed in the Technology Capital Reserve Fund previously established, with said sum to come from unassigned fund balance at year end (June 30, 2022)? ([here is currently \$90,000 in said reserve fund.]

(The School Board Recommends Approval)

(Estimated Tax Impact: \$.00)

Scott Ritzmann made motion to move to ballot. Edward Andersen gave the second. Scott Ritzmann discussed the purpose of raising and appropriating \$50,000 for the reserve fund. The District's virtual server is aging out and that provides the infrastructure for our network. This will help ensure that we keep things operating appropriately.

Moderator Simpson took a vote on the article - the ayes have it. Moderator moved Article 9 to the ballot.

Scott Ritzmann made a motion to restrict reconsideration. Second from Edward Andersen. Vote taken and ayes have it.

**YES 783**

**NO 397**

***Passed***

9. Shall the District raise and appropriate the sum of Fifty Thousand Dollars (\$50,000) to be placed in the Sunapee School Building Capital Reserve Fund previously established with said sum to be funded from unassigned fund balance at year end (June 30, 2022)? (There is currently \$139,624 in said reserve fund.)

(The School Board Recommends Approval)

(Estimated Tax Impact: \$.00)

Jesse Tyler made a motion to move to the warrant. Andy Nichols gave the second. Jesse Tyler discussed that this fund is what the school board uses to cover emergency fixes and repairs. John Augustine addressed that he thinks \$50,000 is not enough compared to capital reserve

Moderator Simpson took a vote on the article - the ayes have it. Moderator moved Article 9 to the ballot.

Scott Ritzmann made a motion to restrict reconsideration. Edward Andersen gave the second. Vote taken and ayes have it.

**YES 818      NO 364      *Passed***

10. To transact any other business which may legally come before the meeting.

Meeting Adjourned at 8:02 PM by Moderator Simpson.

Signed: Jennifer R. Correa Dated: 3/10/2022

Jennifer R. Correa, School Clerk

# SUNAPEE SCHOOL DISTRICT WARRANT

## 2023-2024

To the inhabitants of the School District of the Town of Sunapee qualified to vote upon District affairs:

You are hereby notified to meet at the Sunapee Middle High School Gymnasium and Classrooms located on 10 North Rd in said Sunapee, New Hampshire on Monday, February 6, 2023 at 6PM for the first session of the Annual School District Meeting to deliberate upon the articles, and to meet again at the David W. Sherburne Gymnasium located on Route 11 in said Sunapee, New Hampshire on Tuesday, March 14, 2023 between the hours of 8AM and 7PM for the second session of the Annual School District Meeting to vote by ballot upon the following articles:

1. To choose a clerk, treasurer, and moderator for one year terms, and two members of the School Board for the ensuing three years.
2. To hear reports of agents, auditors and committees or officers heretofore chosen.
3. Shall the District raise and appropriate as an operating budget, not including appropriations by special warrant articles and other appropriations voted separately, the amounts set forth on the budget posted with the warrant, or as amended by vote of the first session, for the purposes set forth therein, totaling Fourteen Million, One Hundred Forty-Six Thousand, Nine Hundred Twenty Dollars (\$14,146,920)? Should this article be defeated, the default budget shall be Fourteen Million, Eighty Thousand, One Hundred Sixty-One Dollars (\$14,080,161), which is the same as last year, with certain adjustments required by previous action of the District or by law; or the governing body may hold one special meeting, in accordance with RSA 40:13, X and XVI, to take up the issue of a revised operating budget only?  
*(The School Board Recommends Approval)* (Estimated. Tax Impact: \$.76)

***(Article 3: As amended by the School Board and at Deliberative Session 2/6/2023)***

4. Shall the District vote to establish a Sunapee Middle High School Heating Ventilation and Circulation Capital Reserve Fund under the provisions of RSA 35:1 for the purpose of designing, upgrading and installing HVAC systems at the Sunapee Middle High School, and to raise and appropriate the sum of \$25,000 to be placed in this fund? Further, to name the Sunapee School Board as agents to expend from said fund?  
*(The School Board Recommends Approval)* (Estimated Tax Impact: \$.02)
5. Shall the District vote to establish a Sunapee Grounds Capital Reserve Fund under the provisions of RSA 35:1 for the purpose of designing, creating, and installing fields, playgrounds, parking and grounds improvements in and around the Sunapee School Facilities and authorize the sum of \$75,000 to be placed in this fund from the June 30, 2023 unreserved fund balance? Further, to name the Sunapee School Board as agents to expend from said fund?  
*(The School Board Recommends Approval)* (Estimated Tax Impact: \$.00)

6. Shall the District vote to establish a Sunapee Central Elementary School Educational Space Renovation Capital Reserve Fund under the provisions of RSA 35:1 for the purpose of designing, upgrading and renovating educational spaces at the Sunapee Central Elementary School and authorize the sum of \$75,000 to be placed in this fund from the June 30, 2023 unreserved fund balance? Further, to name the Sunapee School Board as agents to expend from said fund?  
*(The School Board Recommends Approval)* (Estimated Tax Impact: \$.00)
7. To transact any other business which may legally come before the meeting.



**2023-2024 SUNAPEE SCHOOL DISTRICT OPERATING BUDGET**

Account	Description	FY 21-22 BUDGET	FY 21-22 ACTUALS	FY 22-23 ADOPTED	FY 23-24 PROPOSED	DOLLAR DIFFERENCE	PERCENT DIFFERENCE
100.1100.112.11.000000	SALARIES, TCHRS, E	\$1,302,385.00	\$1,240,852.77	\$1,340,071.00	\$1,261,408.00	(\$78,663.00)	
100.1100.112.30.000000	SALARIES, TCHRS, MH	\$1,725,335.00	\$1,633,064.47	\$1,746,302.00	\$1,695,632.00	(\$50,670.00)	
100.1100.114.11.000000	WAGES, PARAS, E	\$12,926.00	\$41,779.28	\$24,799.00	\$37,021.00	\$12,222.00	
100.1100.114.30.000000	WAGES, PARAS, MH	\$19,025.00	\$62,219.57	\$31,118.00	\$20,185.00	(\$10,933.00)	
100.1100.122.00.000000	SALARIES-SUBSTITUTES	\$60,000.00	\$51,549.77	\$60,000.00	\$60,000.00	\$0.00	
100.1100.330.11.000000	CONT SRV, E	\$5,000.00	\$5,374.79	\$5,000.00	\$5,000.00	\$0.00	
100.1100.330.30.000000	CONT SRV, MHS	\$8,300.00	\$12,404.82	\$8,300.00	\$9,600.00	\$1,300.00	
100.1100.610.11.000000	SUPPLIES, E	\$19,040.00	\$32,319.90	\$18,540.00	\$21,000.00	\$2,460.00	
100.1100.610.30.000000	SUPPLIES, MH	\$47,300.00	\$43,820.12	\$49,250.00	\$57,450.00	\$8,200.00	
100.1100.641.11.000000	PRINT MEDIA, E	\$4,840.00	\$9,440.33	\$5,925.00	\$9,800.00	\$3,875.00	
100.1100.641.30.000000	PRINT MEDIA, MH	\$7,600.00	\$2,428.84	\$3,900.00	\$6,300.00	\$2,400.00	
100.1100.650.30.000000	SOFTWARE, MH	\$6,175.00	\$10,067.20	\$8,500.00	\$8,500.00	\$0.00	
100.1100.730.11.000000	EQUIP, E	\$4,000.00	\$4,085.01	\$1,960.00	\$3,940.00	\$1,980.00	
100.1100.730.30.000000	EQUIP, MHS	\$9,550.00	\$18,444.60	\$8,500.00	\$10,900.00	\$2,400.00	
<b>Func: INSTRUCTION-REGULAR EDUCATION - 1100</b>		<b>\$3,231,476.00</b>	<b>\$3,167,851.47</b>	<b>\$3,312,165.00</b>	<b>\$3,206,736.00</b>	<b>(\$105,429.00)</b>	<b>(3.18)</b>
100.1200.111.00.000000	SALARIES SPED, ADMIN.	\$101,028.00	\$101,825.00	\$104,571.00	\$108,150.00	\$3,579.00	
100.1200.112.11.000000	SALARIES, TE SPED, E	\$225,523.00	\$156,434.89	\$227,922.00	\$244,315.00	\$16,393.00	
100.1200.112.30.000000	SALARIES, SPED, HS	\$266,633.00	\$291,543.86	\$248,537.00	\$250,569.00	\$2,032.00	
100.1200.114.11.000000	SALARIES, SPED P, E	\$170,505.00	\$95,041.98	\$177,352.00	\$184,783.00	\$7,431.00	
100.1200.114.30.000000	SALARIES, SPED P, MHS	\$165,667.00	\$92,967.48	\$147,906.00	\$160,409.00	\$12,503.00	
100.1200.115.00.000000	SALARIES, SPED, ADMIN ASSNT	\$26,270.00	\$42,424.69	\$22,386.00	\$48,204.00	\$25,818.00	
100.1200.330.00.000000	CONTRACTED SERVICES	\$55,500.00	\$12,993.79	\$49,000.00	\$49,000.00	\$0.00	
100.1200.561.00.000000	TUITION, SPED NH LEA, OOD, SSD	\$0.00	\$3,150.72	\$0.00	\$50,000.00	\$50,000.00	
100.1200.564.00.000000	TUITION, SPED, NP, OOD	\$540,000.00	\$515,405.47	\$600,000.00	\$550,000.00	(\$50,000.00)	
100.1200.580.00.000000	TRAVEL, SPED DTR	\$4,500.00	\$2,097.25	\$4,500.00	\$4,500.00	\$0.00	
100.1200.610.11.000000	SUPPLIES, SPED, E	\$1,200.00	\$789.78	\$1,200.00	\$1,200.00	\$0.00	
100.1200.610.30.000000	SUPPLIES, SPED, MHS	\$1,200.00	\$1,580.98	\$1,000.00	\$1,200.00	\$200.00	
100.1200.641.11.000000	PRINT MEDIA, SPED, E	\$1,000.00	\$436.17	\$800.00	\$400.00	(\$400.00)	
100.1200.641.30.000000	PRINT MEDIA, SPED, MHS	\$800.00	\$594.39	\$800.00	\$400.00	(\$400.00)	
100.1200.650.00.000000	Software, SPED	\$13,000.00	\$7,488.37	\$12,000.00	\$13,000.00	\$1,000.00	
100.1200.730.11.000000	EQUIP SPED, E	\$1,000.00	\$623.15	\$700.00	\$1,200.00	\$500.00	
100.1200.730.30.000000	EQUIP SPED, MHS	\$800.00	\$446.43	\$800.00	\$400.00	(\$400.00)	
100.1200.810.00.000000	DUES & FEES, SPED, SSD	\$2,100.00	\$5,006.08	\$2,100.00	\$2,500.00	\$400.00	
<b>Func: INSTRUCTION-SPECIAL ED PROGRAMS - 1200</b>		<b>\$1,576,726.00</b>	<b>\$1,330,850.48</b>	<b>\$1,601,574.00</b>	<b>\$1,670,230.00</b>	<b>\$68,656.00</b>	<b>4.29</b>
100.1260.323.00.000000	ESOL CONT SRV	\$0.00	\$0.00	\$0.00	\$5,000.00	\$5,000.00	
<b>Func: INSTRUCTION-BILINGUAL - 1260</b>		<b>\$0.00</b>	<b>\$0.00</b>	<b>\$0.00</b>	<b>\$5,000.00</b>	<b>\$5,000.00</b>	<b>0.00</b>

Account	Description	FY 21-22 BUDGET	FY 21-22 ACTUALS	FY 22-23 ADOPTED	FY 23-24 PROPOSED	DOLLAR DIFFERENCE	PERCENT DIFFERENCE
100.1300.561.30.000000	TUITION, VOC PRO SRVR TECH CNTR	\$8,000.00	\$16,496.87	\$8,000.00	\$10,000.00	\$2,000.00	
<b>Func: INSTRUCTION-VOCATIONAL PROGRAMS - 1300</b>		<b>\$8,000.00</b>	<b>\$16,496.87</b>	<b>\$8,000.00</b>	<b>\$10,000.00</b>	<b>\$2,000.00</b>	<b>25.00</b>
100.1410.112.11.000000	SALARIES, CO-CURR, E	\$16,182.00	\$1,147.26	\$16,182.00	\$16,182.00	\$0.00	
100.1410.112.30.000000	SALARIES, CO-CURR, MHS	\$53,523.00	\$42,613.71	\$58,903.00	\$53,523.00	(\$5,380.00)	
100.1410.330.11.000000	CONT SRV, CO CURRICULAR	\$3,800.00	\$1,220.00	\$3,395.00	\$3,395.00	\$0.00	
100.1410.610.11.000000	SUPPLIES, CO CURR, E	\$1,800.00	\$1,117.73	\$1,800.00	\$1,800.00	\$0.00	
100.1410.610.30.000000	SUPPLIES, CO CURRIC	\$13,900.00	\$31,436.29	\$23,800.00	\$24,600.00	\$800.00	
<b>Func: INSTRUCTION-CO-CURRICULAR ACTIVITIES - 1410</b>		<b>\$89,205.00</b>	<b>\$77,534.99</b>	<b>\$104,080.00</b>	<b>\$99,500.00</b>	<b>(\$4,580.00)</b>	<b>(4.40)</b>
100.1420.116.30.100000	SALARIES, ATHL COACH, MHS	\$70,000.00	\$81,048.98	\$70,000.00	\$70,000.00	\$0.00	
100.1420.390.30.000000	SRVCS, GAME OFF, MHS	\$25,000.00	\$24,383.00	\$25,000.00	\$25,000.00	\$0.00	
100.1420.580.30.000000	TRAVEL, ATHL, MHS	\$1,200.00	\$751.45	\$1,200.00	\$1,200.00	\$0.00	
100.1420.610.30.000000	SUPPLIES, ATHL, MHS	\$23,150.00	\$17,108.86	\$23,150.00	\$23,150.00	\$0.00	
100.1420.810.30.000000	DUES & FEES, ATHL, MHS	\$5,000.00	\$5,520.00	\$5,000.00	\$5,000.00	\$0.00	
<b>Func: INSTRUCTION-ATHLETIC - 1420</b>		<b>\$124,350.00</b>	<b>\$128,812.29</b>	<b>\$124,350.00</b>	<b>\$124,350.00</b>	<b>\$0.00</b>	<b>0.00</b>
100.1430.112.11.000000	SALARIES, SUM SCH, E	\$15,000.00	\$11,259.50	\$15,000.00	\$15,000.00	\$0.00	
100.1430.112.30.000000	SALARIES, SUM SCH, MHS	\$16,000.00	\$12,406.20	\$23,000.00	\$23,000.00	\$0.00	
<b>Func: INSTRUCTION-SUMMER SCHOOL - 1430</b>		<b>\$31,000.00</b>	<b>\$23,665.70</b>	<b>\$38,000.00</b>	<b>\$38,000.00</b>	<b>\$0.00</b>	<b>0.00</b>
100.2113.113.00.000000	SALARIES, ADJUSTMENT COUNSELOR	\$64,299.00	\$67,099.00	\$65,906.00	\$98,850.00	\$32,944.00	
100.2113.323.00.000000	CONT SRV, ADJ COUN	\$1,000.00	\$0.00	\$1,000.00	\$1,000.00	\$0.00	
100.2113.610.00.000000	SUPPLIES, ADJ COUN	\$500.00	\$0.00	\$500.00	\$500.00	\$0.00	
<b>Func: Adjustment Counselor - 2113</b>		<b>\$65,799.00</b>	<b>\$67,099.00</b>	<b>\$67,406.00</b>	<b>\$100,350.00</b>	<b>\$32,944.00</b>	<b>48.87</b>
100.2120.112.11.000000	SALARIES, GUID, E	\$64,543.00	\$64,543.00	\$68,429.00	\$91,703.00	\$23,274.00	
100.2120.112.30.000000	SALARIES, GUID, MHS	\$172,135.00	\$184,082.00	\$176,830.00	\$202,597.00	\$25,767.00	
100.2120.115.30.000000	SALARIES, GUID SEC, MHS	\$52,516.00	\$46,267.00	\$48,767.00	\$50,155.00	\$1,388.00	
100.2120.329.30.000000	TESTING, GUID, MHS	\$5,000.00	\$8,988.00	\$5,000.00	\$4,500.00	(\$500.00)	
100.2120.580.30.000000	TRAVEL, GUID, HS	\$600.00	\$0.00	\$600.00	\$600.00	\$0.00	
100.2120.610.11.000000	SUPPLIES, GUID, E	\$240.00	\$0.00	\$150.00	\$150.00	\$0.00	
100.2120.610.30.000000	SUPPLIES, GUID, MHS	\$6,150.00	\$5,772.27	\$5,850.00	\$6,600.00	\$750.00	
<b>Func: GUIDANCE SERVICES - 2120</b>		<b>\$301,184.00</b>	<b>\$309,652.27</b>	<b>\$305,626.00</b>	<b>\$356,305.00</b>	<b>\$50,679.00</b>	<b>16.58</b>
100.2130.112.11.000000	SALARIES, HEALTH, E	\$67,770.00	\$52,775.50	\$71,488.00	\$79,036.00	\$7,548.00	
100.2130.112.30.000000	SALARIES, HEALTH, MHS	\$60,000.00	\$59,648.62	\$64,110.00	\$79,036.00	\$14,926.00	
100.2130.430.11.000000	REP EQUIP, HEALTH E	\$300.00	\$150.00	\$150.00	\$150.00	\$0.00	
100.2130.430.30.000000	REP EQUIP, HEALTH, MHS	\$300.00	\$150.00	\$300.00	\$300.00	\$0.00	
100.2130.610.11.000000	SUPPLIES, HEALTH, E	\$740.00	\$456.89	\$750.00	\$750.00	\$0.00	
100.2130.610.30.000000	SUPPLIES, HEALTH, MHS	\$2,500.00	\$1,133.80	\$2,500.00	\$2,500.00	\$0.00	

Account	Description	FY 21-22 BUDGET	FY 21-22 ACTUALS	FY 22-23 ADOPTED	FY 23-24 PROPOSED	DOLLAR DIFFERENCE	PERCENT DIFFERENCE
Func: SERVICES- HEALTH/NURSING - 2130		\$131,610.00	\$114,314.81	\$139,298.00	\$161,772.00	\$22,474.00	16.13
100.2140.113.00.000000	SALARIES, PSYCH, DTR	\$70,878.00	\$74,708.00	\$75,078.00	\$87,371.00	\$12,293.00	
100.2140.323.00.000000	CONT SRV PSYCH, SSD	\$14,000.00	\$7,400.00	\$14,000.00	\$16,200.00	\$2,200.00	
100.2140.610.00.000000	SUPPLIES, PSYCH, SSD	\$1,200.00	\$1,646.87	\$1,200.00	\$1,200.00	\$0.00	
Func: SERVICES-PSYCHOLOGICAL - 2140		\$86,078.00	\$83,754.87	\$90,278.00	\$104,771.00	\$14,493.00	16.05
100.2150.113.00.000000	SALARIES, SPEECH, SSD	\$116,303.00	\$116,874.00	\$119,389.00	\$92,224.00	(\$27,165.00)	
100.2150.323.00.000000	CONT SRV, SPEECH, SSD	\$1,200.00	\$0.00	\$1,200.00	\$1,200.00	\$0.00	
100.2150.610.00.000000	SUPPLIES, SPEECH, SSD	\$500.00	\$317.25	\$500.00	\$1,000.00	\$500.00	
Func: SERVICES-SPEECH PATHOLOGY/AUDIOLOGY - 2150		\$118,003.00	\$117,191.25	\$121,089.00	\$94,424.00	(\$26,665.00)	(22.02)
100.2162.323.00.000000	CONT SRV, PT, SSD	\$1,200.00	\$0.00	\$36,000.00	\$1,200.00	(\$34,800.00)	
Func: SERVICES-PHYSICAL THERAPY - 2162		\$1,200.00	\$0.00	\$36,000.00	\$1,200.00	(\$34,800.00)	(96.67)
100.2163.113.00.000000	SALARIES, OT	\$133,032.00	\$120,203.50	\$118,240.00	\$144,717.00	\$26,477.00	
100.2163.323.00.000000	CONT SRV, OT, SSD	\$1,200.00	\$0.00	\$1,200.00	\$1,200.00	\$0.00	
100.2163.610.00.000000	SUPPLIES, OT, SSD	\$1,000.00	\$925.09	\$1,000.00	\$1,000.00	\$0.00	
Func: SERVICES-OCCUPATIONAL THERAPY - 2163		\$135,232.00	\$121,128.59	\$120,440.00	\$146,917.00	\$26,477.00	21.98
100.2213.240.00.000000	COURSE REIMBURSEMENT	\$25,000.00	\$38,365.06	\$25,000.00	\$25,000.00	\$0.00	
100.2213.240.11.100103	CONFERENCES, E	\$7,800.00	\$4,509.65	\$7,800.00	\$11,000.00	\$3,200.00	
100.2213.240.11.100104	CONFERENCES, PRINCIPAL, E	\$2,500.00	\$234.00	\$2,500.00	\$2,500.00	\$0.00	
100.2213.240.30.100103	CONFERENCES, MHS	\$11,000.00	\$6,814.61	\$11,000.00	\$15,000.00	\$4,000.00	
100.2213.240.30.100104	CONFERENCES, PRINCIPAL, MHS	\$2,500.00	\$0.00	\$2,500.00	\$2,500.00	\$0.00	
100.2213.320.30.000000	PROF DEV, MHS	\$1,000.00	\$5,059.00	\$1,000.00	\$1,000.00	\$0.00	
100.2213.330.00.100200	CONFERENCES, TECH	\$3,000.00	\$0.00	\$3,000.00	\$3,000.00	\$0.00	
100.2213.330.00.100204	CONFERENCES, SPED	\$12,000.00	\$9,930.31	\$12,000.00	\$12,000.00	\$0.00	
Func: STAFF DEVELOPMENT/TRAINING - 2213		\$64,800.00	\$64,912.63	\$64,800.00	\$72,000.00	\$7,200.00	11.11
100.2222.112.11.000000	SALARIES, MEDIA, E	\$83,906.00	\$84,856.00	\$86,088.00	\$88,068.00	\$1,980.00	
100.2222.112.30.000000	SALARIES, LIB/MEDIA, MHS	\$83,906.00	\$89,445.50	\$86,088.00	\$88,068.00	\$1,980.00	
100.2222.114.30.000000	SALARIES, PARA, LIB/MEDIA, MHS	\$26,809.00	\$27,852.66	\$27,478.00	\$28,436.00	\$958.00	
100.2222.430.11.000000	CONT SRV, MEDIA, E	\$400.00	\$0.00	\$0.00	\$0.00	\$0.00	
100.2222.430.30.000000	CONT SRV, MEDIA, MHS	\$4,100.00	\$3,744.57	\$4,275.00	\$2,600.00	(\$1,675.00)	
100.2222.610.11.000000	SUPPLIES, MEDIA, E	\$400.00	\$328.52	\$400.00	\$500.00	\$100.00	
100.2222.610.30.000000	SUPPLIES, MEDIA, MHS	\$700.00	\$696.24	\$700.00	\$700.00	\$0.00	
100.2222.641.11.100105	PRINT MEDIA, AV, E	\$2,400.00	\$2,369.85	\$2,670.00	\$3,000.00	\$330.00	
100.2222.641.11.100106	PER/SUB, MEDIA, E	\$1,000.00	\$1,628.06	\$465.00	\$450.00	(\$15.00)	
100.2222.641.30.100105	LIBRARY BOOKS	\$4,200.00	\$4,185.02	\$4,000.00	\$3,500.00	(\$500.00)	
100.2222.641.30.100106	PER/SUB, MEDIA, MHS	\$5,750.00	\$4,498.98	\$5,750.00	\$6,250.00	\$500.00	

Account	Description	FY 21-22 BUDGET	FY 21-22 ACTUALS	FY 22-23 ADOPTED	FY 23-24 PROPOSED	DOLLAR DIFFERENCE	PERCENT DIFFERENCE
100.2222.730.30.000000	EQUIP, MEDIA, MHS	\$1,700.00	\$1,620.57	\$1,700.00	\$1,400.00	(\$300.00)	
<b>Func: LIBRARY/MEDIA SERVICES - 2222</b>		<b>\$215,271.00</b>	<b>\$221,225.97</b>	<b>\$219,614.00</b>	<b>\$222,972.00</b>	<b>\$3,358.00</b>	<b>1.53</b>
100.2225.111.00.000000	SALARIES TECH Admin & Dept	\$140,688.00	\$128,689.97	\$142,821.00	\$169,041.00	\$26,220.00	
100.2225.112.30.000000	SALARIES, TECH INTEGRATOR	\$91,563.00	\$91,802.57	\$93,873.00	\$0.00	(\$93,873.00)	
100.2225.330.00.000000	TECH CONT SERV, DIST	\$11,000.00	\$10,609.50	\$11,000.00	\$36,000.00	\$25,000.00	
100.2225.430.11.000000	REPAIR & MAINT, TECH, E	\$4,845.00	\$608.75	\$4,845.00	\$4,845.00	\$0.00	
100.2225.430.30.000000	REPAIR & MAINT, TECH, MH	\$6,508.00	\$979.15	\$6,508.00	\$6,508.00	\$0.00	
100.2225.531.00.000000	COMMUNICATIONS	\$32,426.00	\$49,896.48	\$32,426.00	\$57,500.00	\$25,074.00	
100.2225.610.00.000000	SUPPLIES, TECH, DIST & SPED	\$2,890.00	\$0.00	\$2,890.00	\$3,000.00	\$110.00	
100.2225.610.11.000000	SUPPLIES, TECH, E	\$2,032.00	\$0.00	\$2,032.00	\$2,032.00	\$0.00	
100.2225.610.30.000000	SUPPLIES, TECH, MH	\$9,950.00	\$602.09	\$9,950.00	\$9,950.00	\$0.00	
100.2225.650.00.000000	SOFTWARE/LICENSES, TECH, DIST.	\$67,500.00	\$52,894.77	\$67,500.00	\$67,500.00	\$0.00	
100.2225.650.11.000000	SOFTWARE/LICENSES, TECH, E	\$6,692.00	\$7,478.00	\$13,470.00	\$19,000.00	\$5,530.00	
100.2225.650.30.000000	SOFTWARE/LICENSES, TECH, MH	\$31,288.00	\$18,891.48	\$31,288.00	\$31,288.00	\$0.00	
100.2225.730.00.000000	EQUIP, COMPUTERS, TECH, DIST. & SPED	\$17,900.00	\$45,216.26	\$17,900.00	\$17,900.00	\$0.00	
100.2225.730.11.000000	EQUIP, COMPUTERS, TECH, E	\$41,621.00	\$45,706.98	\$41,621.00	\$41,621.00	\$0.00	
100.2225.730.30.000000	EQUIP, COMPUTERS, TECH, MH	\$61,114.00	\$56,557.64	\$61,114.00	\$61,114.00	\$0.00	
<b>Func: COMPUTER-ASSISTED INSTRUCTION - 2225</b>		<b>\$528,017.00</b>	<b>\$509,933.64</b>	<b>\$539,238.00</b>	<b>\$527,299.00</b>	<b>(\$11,939.00)</b>	<b>(2.21)</b>
100.2310.121.00.100300	SALARIES, RECORDING SEC	\$4,050.00	\$4,000.00	\$4,000.00	\$4,000.00	\$0.00	
100.2310.121.00.100301	SALARIES, CLERK, TREAS, BOARD	\$10,040.00	\$5,700.00	\$10,040.00	\$10,040.00	\$0.00	
100.2310.390.00.100304	CONT SRV, DIST MTG	\$2,500.00	\$2,200.00	\$2,500.00	\$2,500.00	\$0.00	
100.2310.390.00.100307	CONT SRV, ANNUAL AUDIT	\$10,500.00	\$6,000.00	\$10,500.00	\$10,500.00	\$0.00	
100.2310.390.00.100308	CONT SRV, LEGAL COUN	\$25,000.00	\$20,274.85	\$25,000.00	\$25,000.00	\$0.00	
100.2310.540.00.000000	ADVERTISING	\$10,000.00	\$12,575.90	\$10,000.00	\$10,000.00	\$0.00	
100.2310.550.00.000000	PRINT ANNUAL REPORT	\$3,500.00	\$2,873.00	\$5,000.00	\$5,000.00	\$0.00	
100.2310.610.00.000000	SUPPLIES & MATERIALS	\$3,700.00	\$8,328.62	\$3,700.00	\$4,000.00	\$300.00	
100.2310.810.00.000000	DUES & FEES	\$6,500.00	\$4,356.22	\$7,000.00	\$6,000.00	(\$1,000.00)	
<b>Func: SCHOOL BOARD SERVICES - 2310</b>		<b>\$75,790.00</b>	<b>\$66,308.59</b>	<b>\$77,740.00</b>	<b>\$77,040.00</b>	<b>(\$700.00)</b>	<b>(0.90)</b>
100.2320.111.00.000000	SAU SALARIES	\$324,568.00	\$311,278.35	\$333,147.00	\$364,661.00	\$31,514.00	
100.2320.240.00.000000	PROF GROWTH, STAFF DEV, CONFERENCES	\$9,000.00	\$2,332.18	\$9,000.00	\$9,000.00	\$0.00	
100.2320.390.00.000000	CONT SRV, SAU	\$3,800.00	\$1,178.00	\$3,800.00	\$4,000.00	\$200.00	
100.2320.534.00.000000	POSTAGE, SAU	\$3,500.00	\$3,621.15	\$3,500.00	\$4,000.00	\$500.00	
100.2320.580.00.000000	TRAVEL EXP, SAU	\$9,000.00	\$9,731.67	\$9,000.00	\$9,000.00	\$0.00	
100.2320.610.00.000000	SUPPLIES, SAU	\$6,000.00	\$6,838.72	\$6,000.00	\$6,000.00	\$0.00	
100.2320.622.00.000000	ELECTRICITY, SAU	\$2,800.00	\$3,303.04	\$3,000.00	\$4,500.00	\$1,500.00	
100.2320.640.00.000000	SUBSCRIPTIONS, SAU	\$500.00	\$0.00	\$500.00	\$500.00	\$0.00	
100.2320.650.00.000000	SAU SOFTWARE	\$15,000.00	\$29,458.31	\$27,000.00	\$33,000.00	\$6,000.00	
100.2320.730.00.000000	EQUIP, SAU	\$1,500.00	\$0.00	\$1,500.00	\$1,500.00	\$0.00	

Account	Description	FY 21-22 BUDGET	FY 21-22 ACTUALS	FY 22-23 ADOPTED	FY 23-24 PROPOSED	DOLLAR DIFFERENCE	PERCENT DIFFERENCE
100.2320.810.00.000000	DUES & FEES, SAU	\$6,000.00	\$3,964.00	\$6,000.00	\$6,000.00	\$0.00	
<b>Func: EXECUTIVE ADMINISTRATION SERVICES - 2320</b>		<b>\$381,668.00</b>	<b>\$381,705.42</b>	<b>\$402,447.00</b>	<b>\$442,161.00</b>	<b>\$39,714.00</b>	<b>9.87</b>
100.2400.111.11.000000	SALARIES, PRIN, E	\$96,933.00	\$102,524.30	\$98,871.00	\$102,336.00	\$3,465.00	
100.2400.111.30.000000	SALARIES, PRIN & ASSNT, MHS	\$173,885.00	\$174,186.54	\$177,363.00	\$184,474.00	\$7,111.00	
100.2400.115.11.000000	SALARIES, ADM ASSNT, E	\$35,504.00	\$34,123.14	\$37,073.00	\$49,438.00	\$12,365.00	
100.2400.115.30.000000	SALARIES, ADMIN ASSNT, MHS	\$74,453.00	\$66,032.67	\$68,345.00	\$63,884.00	(\$4,461.00)	
100.2400.390.11.000000	CONT SRV, E	\$300.00	\$154.00	\$300.00	\$300.00	\$0.00	
100.2400.390.30.000000	CONT SRV, HS	\$0.00	\$0.00	\$1,000.00	\$1,000.00	\$0.00	
100.2400.430.30.000000	REP EQUIP, HS	\$500.00	\$0.00	\$500.00	\$500.00	\$0.00	
100.2400.534.11.000000	POSTAGE, PRINC, E	\$300.00	\$93.05	\$400.00	\$250.00	(\$150.00)	
100.2400.534.30.000000	POSTAGE, PRINC, HS	\$2,000.00	\$1,961.48	\$2,000.00	\$2,000.00	\$0.00	
100.2400.550.11.000000	PRINTING, E	\$0.00	\$0.00	\$150.00	\$150.00	\$0.00	
100.2400.550.30.000000	PRINTING, HS	\$3,500.00	\$4,068.89	\$3,500.00	\$4,500.00	\$1,000.00	
100.2400.580.11.000000	TRAVEL, E	\$400.00	\$0.00	\$400.00	\$400.00	\$0.00	
100.2400.580.30.000000	TRAVEL, HS	\$1,500.00	\$2,578.43	\$1,500.00	\$1,500.00	\$0.00	
100.2400.610.11.000000	SUPPLIES, E	\$400.00	\$386.74	\$250.00	\$250.00	\$0.00	
100.2400.610.30.000000	SUPPLIES, HS	\$10,250.00	\$11,798.12	\$10,750.00	\$10,850.00	\$100.00	
100.2400.810.11.000000	DUES, FEES, E	\$650.00	\$884.00	\$650.00	\$844.00	\$194.00	
100.2400.810.30.000000	DUES, FEES, HS	\$6,553.00	\$9,188.00	\$6,578.00	\$6,578.00	\$0.00	
<b>Func: PRINCIPAL/SCHOOL ADMINISTRATION - 2400</b>		<b>\$407,128.00</b>	<b>\$407,979.36</b>	<b>\$409,630.00</b>	<b>\$429,254.00</b>	<b>\$19,624.00</b>	<b>4.79</b>
100.2600.111.00.000000	SALARIES, FACILITIES DIRECTOR	\$61,200.00	\$61,500.00	\$62,424.00	\$65,242.00	\$2,818.00	
100.2600.119.00.000000	SALARIES, B & G, DISTRICT WIDE	\$65,574.00	\$38,337.49	\$66,513.00	\$66,513.00	\$0.00	
100.2600.119.11.000000	SALARIES, B & G, E	\$95,249.00	\$47,956.11	\$93,869.00	\$81,090.00	(\$12,779.00)	
100.2600.119.30.000000	SALARIES, B & G, SMHS	\$124,431.00	\$166,832.96	\$122,189.00	\$126,237.00	\$4,048.00	
100.2600.330.11.143000	EEL for SCES	\$0.00	\$4,000.00	\$0.00	\$0.00	\$0.00	
100.2600.330.11.144000	SCES General Life Safety	\$0.00	\$6,237.20	\$0.00	\$0.00	\$0.00	
100.2600.330.30.100000	SMHS ROOF	\$0.00	\$19,064.08	\$0.00	\$0.00	\$0.00	
100.2600.330.30.145000	SMHS General Life Safety	\$0.00	\$3,300.00	\$0.00	\$0.00	\$0.00	
100.2600.411.00.000000	WATER & SEWER, DIST & GYM	\$4,000.00	\$2,663.00	\$4,000.00	\$4,000.00	\$0.00	
100.2600.411.11.000000	WATER & SEWER, E	\$6,000.00	\$3,826.77	\$7,000.00	\$7,000.00	\$0.00	
100.2600.411.30.000000	WATER & SEWER, MHS	\$22,000.00	\$21,847.76	\$22,000.00	\$22,000.00	\$0.00	
100.2600.430.00.000000	MAINT & REPAIR, GYM	\$9,500.00	\$1,195.80	\$9,500.00	\$9,500.00	\$0.00	
100.2600.430.00.001000	MAINT & REPAIR, BLODGETT	\$5,000.00	\$0.00	\$5,000.00	\$5,000.00	\$0.00	
100.2600.430.00.002000	MAINT & REPAIR, DIST	\$12,494.00	\$16,281.33	\$12,494.00	\$12,494.00	\$0.00	
100.2600.430.11.000000	MAINT & REPAIR, E	\$33,520.00	\$23,376.67	\$33,520.00	\$33,520.00	\$0.00	
100.2600.430.30.000000	MAINT & REPAIR, MHS	\$67,000.00	\$61,048.79	\$67,000.00	\$67,000.00	\$0.00	
100.2600.431.11.000000	CONT SERV, E	\$23,260.00	\$14,608.63	\$23,260.00	\$37,000.00	\$13,740.00	
100.2600.431.30.000000	CONT SERV, MHS	\$35,882.00	\$60,186.96	\$35,882.00	\$40,000.00	\$4,118.00	
100.2600.450.00.100000	SPECIAL FIELDS MAINTENANCE	\$20,000.00	\$41,423.57	\$20,000.00	\$20,000.00	\$0.00	

Account	Description	FY 21-22 BUDGET	FY 21-22 ACTUALS	FY 22-23 ADOPTED	FY 23-24 PROPOSED	DOLLAR DIFFERENCE	PERCENT DIFFERENCE
100.2600.450.30.000000	SPECIAL PROJECTS MHS	\$12,000.00	\$2,050.00	\$12,000.00	\$12,000.00	\$0.00	
100.2600.520.00.000000	PROPERTY & LIABILITY INS.	\$32,265.00	\$28,280.10	\$36,000.00	\$33,000.00	(\$3,000.00)	
100.2600.580.00.000000	TRAVEL	\$1,310.00	\$0.00	\$1,310.00	\$1,310.00	\$0.00	
100.2600.610.00.000000	SUPPLIES, GYM	\$3,000.00	\$2,908.75	\$3,000.00	\$3,200.00	\$200.00	
100.2600.610.11.000000	SUPPLIES E	\$17,000.00	\$29,274.92	\$17,000.00	\$18,200.00	\$1,200.00	
100.2600.610.30.000000	SUPPLIES MHS	\$32,000.00	\$65,878.22	\$32,000.00	\$34,250.00	\$2,250.00	
100.2600.622.00.000000	ELECTRICITY, GYM	\$9,321.00	\$5,732.33	\$7,000.00	\$10,500.00	\$3,500.00	
100.2600.622.11.000000	ELECTRICITY, E	\$21,000.00	\$24,762.64	\$21,000.00	\$31,500.00	\$10,500.00	
100.2600.622.30.000000	ELECTRICITY, MHS	\$95,000.00	\$85,783.25	\$95,000.00	\$142,500.00	\$47,500.00	
100.2600.623.00.000000	PROPANE, DIST	\$1,500.00	\$1,599.68	\$2,500.00	\$2,500.00	\$500.00	
100.2600.623.11.000000	PROPANE, E	\$1,500.00	\$2,538.85	\$1,500.00	\$8,000.00	\$6,500.00	
100.2600.623.30.000000	PROPANE, MHS	\$1,000.00	\$2,206.91	\$2,000.00	\$2,000.00	\$0.00	
100.2600.624.00.000000	FUEL/BIOMASS, DISTRICT	\$10,000.00	\$14,056.29	\$10,000.00	\$27,900.00	\$17,900.00	
100.2600.624.11.000000	FUEL/BIOMASS, E	\$20,000.00	\$18,078.66	\$20,000.00	\$0.00	(\$20,000.00)	
100.2600.624.30.000000	FUEL SMHS	\$85,000.00	\$86,666.48	\$35,000.00	\$100,000.00	\$65,000.00	
100.2600.626.00.000000	GAS-DIESEL	\$3,500.00	\$4,692.30	\$3,500.00	\$4,500.00	\$1,000.00	
100.2600.730.30.000000	EQUIP, MH	\$9,800.00	\$5,377.63	\$9,800.00	\$9,800.00	\$0.00	
<b>Func: Buildings &amp; Grounds - 2600</b>		<b>\$940,306.00</b>	<b>\$973,574.13</b>	<b>\$892,761.00</b>	<b>\$1,037,756.00</b>	<b>\$144,995.00</b>	<b>16.24</b>
100.2720.117.00.000000	Repair and Maintenance Trips	\$0.00	\$4,877.46	\$3,000.00	\$3,000.00	\$0.00	
<b>Func: TRANSPORTATION - 2720</b>		<b>\$0.00</b>	<b>\$4,877.46</b>	<b>\$3,000.00</b>	<b>\$3,000.00</b>	<b>\$0.00</b>	<b>0.00</b>
100.2721.117.00.000000	REGULAR TRANSPORTATION	\$155,343.00	\$127,196.28	\$141,982.00	\$141,686.00	(\$296.00)	
100.2721.240.00.000000	STAFF DEV, TRANS	\$1,000.00	\$181.01	\$1,000.00	\$1,000.00	\$0.00	
100.2721.329.00.000000	PHYSICALS/DRUG TESTING, TRANS	\$2,000.00	\$2,347.00	\$2,000.00	\$2,500.00	\$500.00	
100.2721.430.00.000000	REPAIR & MAINT, TRANS	\$50,000.00	\$30,838.75	\$45,000.00	\$50,000.00	\$5,000.00	
100.2721.610.00.000000	SUPPLIES, TRANS	\$1,000.00	\$561.78	\$1,000.00	\$750.00	(\$250.00)	
100.2721.626.00.000000	DIESEL FUEL, TRANS	\$40,000.00	\$34,384.49	\$40,000.00	\$55,000.00	\$15,000.00	
100.2721.730.00.000000	EQUIPMENT, TRANS	\$95,000.00	\$108,872.17	\$98,000.00	\$120,000.00	\$22,000.00	
100.2721.731.00.000000	RADIO UPGRADES, TRANS	\$2,000.00	\$0.00	\$3,000.00	\$3,000.00	\$0.00	
100.2721.810.00.000000	DUES & FEES, TRANS	\$800.00	\$619.00	\$900.00	\$900.00	\$0.00	
<b>Func: TRANSPORTATION-REGULAR - 2721</b>		<b>\$347,143.00</b>	<b>\$305,000.48</b>	<b>\$332,882.00</b>	<b>\$374,836.00</b>	<b>\$41,954.00</b>	<b>12.60</b>
100.2722.117.00.000000	SPED DRIVER, TRANS	\$62,741.00	\$84,155.66	\$49,500.00	\$37,531.00	(\$11,969.00)	
100.2722.519.30.210000	CONT, SPED-TRANS, MH	\$3,500.00	\$0.00	\$6,000.00	\$6,000.00	\$0.00	
<b>Func: TRANSPORTATION-SPED - 2722</b>		<b>\$66,241.00</b>	<b>\$84,155.66</b>	<b>\$55,500.00</b>	<b>\$43,531.00</b>	<b>(\$11,969.00)</b>	<b>(21.57)</b>
100.2723.117.30.300000	VOCATIONAL, TRANS	\$8,000.00	\$12,578.72	\$15,850.00	\$15,850.00	\$0.00	
<b>Func: TRANSPORTATION-VOCATIONAL - 2723</b>		<b>\$8,000.00</b>	<b>\$12,578.72</b>	<b>\$15,850.00</b>	<b>\$15,850.00</b>	<b>\$0.00</b>	<b>0.00</b>
100.2724.117.00.000000	ATHLETICS, TRANS	\$24,000.00	\$19,589.04	\$24,000.00	\$24,000.00	\$0.00	

Account	Description	FY 21-22 BUDGET	FY 21-22 ACTUALS	FY 22-23 ADOPTED	FY 23-24 PROPOSED	DOLLAR DIFFERENCE	PERCENT DIFFERENCE
Func: TRANSPORTATION-ATHLETIC - 2724		\$24,000.00	\$19,589.04	\$24,000.00	\$24,000.00	\$0.00	0.00
100.2725.117.11.000000	FIELD TRIPS, TRANS, E	\$0.00	\$1,177.55	\$3,000.00	\$3,000.00	\$0.00	
100.2725.117.30.000000	FIELD TRIPS, TRANS, MH	\$0.00	\$2,844.83	\$6,000.00	\$6,000.00	\$0.00	
Func: TRANSPORTATION-FIELD TRIPS - 2725		\$0.00	\$4,022.38	\$9,000.00	\$9,000.00	\$0.00	0.00
100.2900.211.00.000000	HEALTH INSURANCE	\$1,810,299.00	\$1,541,370.68	\$1,859,607.00	\$1,835,220.00	(\$24,387.00)	
100.2900.212.00.000000	DENTAL INSURANCE	\$110,853.00	\$95,827.63	\$116,446.00	\$104,648.00	(\$11,798.00)	
100.2900.213.00.000000	LIFE INSURANCE	\$9,462.00	\$9,280.03	\$9,294.00	\$9,640.00	\$346.00	
100.2900.220.00.000000	FICA	\$523,980.00	\$494,261.83	\$531,281.00	\$527,139.00	(\$4,142.00)	
100.2900.230.00.000000	TEACHER RETIREMENT	\$1,031,676.00	\$944,046.77	\$1,054,874.00	\$1,045,392.00	(\$9,482.00)	
100.2900.235.00.000000	EMPLOYEE RETIREMENT	\$197,247.00	\$202,877.77	\$206,969.00	\$224,412.00	\$17,443.00	
100.2900.250.00.000000	UNEMPLOYMENT	\$2,000.00	\$963.19	\$2,000.00	\$2,000.00	\$0.00	
100.2900.260.00.000000	WORKERS COMPENSATION	\$22,000.00	\$22,547.61	\$30,000.00	\$25,000.00	(\$5,000.00)	
Func: BENEFITS - 2900		\$3,707,517.00	\$3,311,175.51	\$3,810,471.00	\$3,773,451.00	(\$37,020.00)	(0.97)
100.5100.830.00.000000	INTEREST ON BONDS/LEASE	\$0.00	\$0.00	\$0.00	\$156,693.00	\$156,693.00	
100.5100.910.00.000000	PRINCIPAL ON BONDS/LEASE	\$0.00	\$0.00	\$0.00	\$423,522.00	\$423,522.00	
Func: DEBT SERVICE - 5100		\$0.00	\$0.00	\$0.00	\$580,215.00	\$580,215.00	0.00
100.5220.930.00.000000	TRANSFER TO FED FUNDS	\$250,000.00	\$0.00	\$250,000.00	\$250,000.00	\$0.00	
Func: TRANSFER TO FEDERAL FUND - 5220		\$250,000.00	\$0.00	\$250,000.00	\$250,000.00	\$0.00	0.00
100.5240.930.00.000000	TRANSFER TO FOOD SERVICE	\$132,000.00	\$0.00	\$132,000.00	\$145,000.00	\$13,000.00	
Func: TRANSFER TO FOOD SERV - 5240		\$132,000.00	\$0.00	\$132,000.00	\$145,000.00	\$13,000.00	9.85
Grand Total:		\$13,047,744.00	\$11,925,391.58	\$13,307,239.00	\$14,146,920.00	\$839,681.00	6.31

## SUNAPEE SCHOOL DISTRICT REVENUE

Account #	REVENUE DESCRIPTION	FY2022 ACTUAL	FY2023 Adopted	FY2024 PROPOSED
	Fund Balance Designated for			
	Fund Transfers	\$40,000	\$100,000	\$150,000
	Unassigned Fund Balance	\$575,209	\$631,520	\$250,000
	State Education Grant	\$0	\$692,610	\$0
1311	PUC & Lease Agreement	\$0	\$5,169,714	\$0
1321	Tuition General Ed	\$455,868	\$350,000	\$350,000
1322	Tuition Preschool	\$21,155	\$15,000	\$15,000
1510	Earnings on Investments	\$1,493	\$2,000	\$2,000
1990	Other Income	\$33,387	\$2,000	\$2,000
	<b>TOTAL LOCAL REVENUE</b>	<b>\$1,127,112</b>	<b>\$6,962,844</b>	<b>\$769,000</b>
3119	NHRS	\$0	\$65,602	\$0
3220	Kindergarten Aid	\$0	\$0	\$0
3230	Catastrophic Aid	\$372,178	\$250,000	\$250,000
3242	Area Voc Aid - Transportation	\$1,153		
	<b>TOTAL STATE REVENUE</b>	<b>\$373,331</b>	<b>\$315,602</b>	<b>\$250,000</b>
4580	Medicaid Reimbursement	\$16,291	\$15,000	\$15,000
	<b>TOTAL FEDERAL REVENUE</b>	<b>\$16,291</b>	<b>\$15,000</b>	<b>\$15,000</b>
<b>TOTAL</b>	<b>GENERAL FUND REVENUE</b>	<b>\$1,516,734</b>	<b>\$7,293,446</b>	<b>\$1,034,000</b>
	1600 Food Service Lunch Sales	\$75,017	\$75,000	\$75,000
	3260 Child Nutrition(State Funding)	\$239	\$250	\$250
	4560 Child Nutrition(Federal Funding)	\$48,837	\$49,000	\$49,000
	4100 Federal Programs Fund	\$364,283	\$777,931	\$250,000
	5251 Capital Reserve Fund	\$0	\$0	\$0
<b>TOTAL</b>	<b>REVENUE ALL FUNDS</b>	<b>\$2,005,110</b>	<b>\$8,195,627</b>	<b>\$1,408,250</b>
<b>TOTAL APPROPRIATION</b>		<b>\$12,807,206</b>	<b>\$19,654,355</b>	<b>\$14,146,920</b>
<b>LOCAL TAX ASSESSMENT</b>		<b>\$11,519,035</b>	<b>\$11,458,728</b>	<b>\$12,738,670</b>
<b>ESTIMATED TAX RATE</b>		<b>\$7.86</b>	<b>\$7.75</b>	<b>\$8.51</b>
	Net Assessed Valuation	1,472,667,842	1,481,348,412	1,496,161,896
	2022 NAV 1,481,348,412			
	2023 EST. NAV 1,496,161,896			





## Sunapee School District Default Budget 23-24

	22-23 Adopted Budget	23-24 Proposed Budget	23-24 Default Budget
Regular Instruction	3,312,165	3,206,736	3,312,165
Special programs	1,601,574	1,675,230	1,665,247
Vocational Education	8,000	10,000	10,000
Cocurricular Activities	266,430	261,850	266,430
Student Services	880,137	965,739	949,722
Support Services	823,652	822,271	834,812
Administration	889,817	948,455	889,817
Buildings and Grounds	892,761	1,037,756	892,761
Transportation	440,232	470,217	455,732
Taxes and Benefits	3,810,471	3,773,451	3,828,260
Lease Payments	0.00	580,215	580,215
Food Service and Special Projects	382,000	395,000	395,000
<b>Total</b>	<b>13,307,239</b>	<b>14,146,920</b>	<b>14,080,161</b>

**SPECIAL EDUCATION EXPENDITURES / REVENUE**  
**June 30, 2022**

<b>Special Education Expenditures</b>	<b>2020-2021</b>	<b>2021-2022</b>
<b>Salaries/ Benefits</b>	<b>\$2,692,902</b>	<b>\$2,555,281</b>
<b>Purchased Services</b>	<b>\$731,550</b>	<b>\$599,087</b>
<b>Supplies</b>	<b>\$47,463</b>	<b>\$47,212</b>
<b>Equipment</b>	<b>\$1,787</b>	<b>\$1,501</b>
<b>Other</b>	<b>\$4,603</b>	<b>\$5,006</b>
<b><u>Total Expenditures</u></b>	<b><u>\$3,478,305</u></b>	<b><u>\$3,208,087</u></b>
<b>Special Education Revenue</b>	<b>2020-2021</b>	<b>2021-2022</b>
<b>State Special Education Aid</b>	<b>\$320,932</b>	<b>\$372,178</b>
<b>IDEA entitlement</b>		
<b>a) Part B 3-21</b>	<b>\$250,139</b>	<b>\$161,952</b>
<b>b) Pre-School</b>	<b>\$4,000</b>	<b>\$3,872</b>
<b>Title 1</b>	<b>\$33,578</b>	<b>\$49,243</b>
<b>Medicaid</b>	<b>\$27,779</b>	<b>\$16,291</b>
<b><u>Total Revenues</u></b>	<b><u>\$636,428</u></b>	<b><u>\$603,536</u></b>
<b><u>District Cost for Special Education</u></b>	<b><u>\$2,841,877</u></b>	<b><u>\$2,604,551</u></b>



## Independent Auditor's Report

To the Members of the Select Board and Management of  
Sunapee School District

We have audited the accompanying financial statements of the governmental activities, each major fund, and the aggregate remaining fund information of the Sunapee School District as of and for the year ended June 30, 2021, and the related notes to the financial statements, which collectively comprise the School District's basic financial statements as listed in the table of contents.

### **Management's Responsibility for the Financial Statements**

Management is responsible for the preparation and fair presentation of these financial statements in accordance with accounting principles generally accepted in the United States of America; this includes the design, implementation, and maintenance of internal control relevant to the preparation and fair presentation of financial statements that are free from material misstatement, whether due to fraud or error.

### **Auditor's Responsibility**

Our responsibility is to express opinions on these financial statements based on our audit. We conducted our audit in accordance with auditing standards generally accepted in the United States of America. Those standards require that we plan and perform the audit to obtain reasonable assurance about whether the financial statements are free from material misstatement.

An audit involves performing procedures to obtain audit evidence about the amounts and disclosures in the financial statements. The procedures selected depend on the auditor's judgment, including the assessment of the risks of material misstatement of the financial statements, whether due to fraud or error. In making those risk assessments, the auditor considers internal control relevant to the entity's preparation and fair presentation of the financial statements in order to design audit procedures that are appropriate in the circumstances, but not for the purpose of expressing an opinion on the effectiveness of the entity's internal control. Accordingly, we express no such opinion. An audit also includes evaluating the appropriateness of accounting policies used and the reasonableness of significant accounting estimates made by management, as well as evaluating the overall presentation of the financial statements.

We believe that the audit evidence we have obtained is sufficient and appropriate to provide a basis for our audit opinions.

### **Opinions**

In our opinion, the financial statements referred to above present fairly, in all material respects, the respective financial position of the governmental activities, each major fund, and the aggregate remaining fund information of the Sunapee School District, as of June 30, 2021 and the respective changes in financial position and, where applicable, cash flows thereof for the year then ended in accordance with accounting principles generally accepted in the United States of America.

## Other Matters

### *Required Supplementary Information*

Accounting principles generally accepted in the United States of America require that the management's discussion and analysis budgetary comparison information on pages 28–30 be presented to supplement the basic financial statements. Such information, although not a part of the basic financial statements, is required by the Governmental Accounting Standards Board, who considers it to be an essential part of financial reporting for placing the basic financial statements in an appropriate operational, economic, or historical context. We have applied certain limited procedures to the required supplementary information in accordance with auditing standards generally accepted in the United States of America, which consisted of inquiries of management about the methods of preparing the information and comparing the information for consistency with management's responses to our inquiries, the basic financial statements, and other knowledge we obtained during our audit of the basic financial statements. We do not express an opinion or provide any assurance on the information because the limited procedures do not provide us with sufficient evidence to express an opinion or provide any assurance.

### *Other Information*

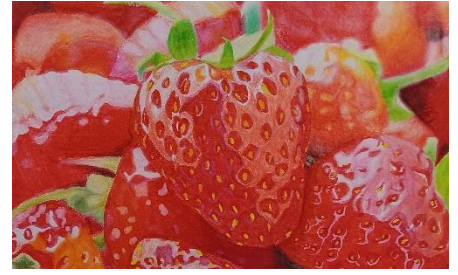
Our audit was conducted for the purpose of forming opinions on the financial statements that collectively comprise the Sunapee School District's basic financial statements. The accompanying schedules listed in the table of contents such as the individual fund financial statements and schedules are presented for purposes of additional analysis and are not a required part of the basic financial statements.

This information is the responsibility of management and was derived from and relates directly to the underlying accounting and other records used to prepare the basic financial statements. Such information has been subjected to the auditing procedures applied in the audit of the basic financial statements and certain additional procedures, including comparing and reconciling such information directly to the underlying accounting and other records used to prepare the basic financial statements or to the basic financial statements themselves, and other additional procedures in accordance with auditing standards generally accepted in the United States of America. In our opinion, this information is fairly stated, in all material respects, in relation to the basic financial statements as a whole.

*Alta CPA Group, LLC*

February 18, 2022

# Life at SMHS



# SUNAPEE SCHOOL DISTRICT INFORMATION

## SAU 85

**Russell Holden, Superintendent**

70 Lower Main Street

Sunapee, NH 03782

603-763-4627

603-763-4718 (FAX)

[rholden@sunapeeschools.org](mailto:rholden@sunapeeschools.org)

## Sunapee Central Elementary School (SCES)

**Patrick Gordon, Principal**

22 School Street

Sunapee, NH 03782

603-763-5675

603-763-9627 (FAX)

[whuston@sunapeeschools.org](mailto:whuston@sunapeeschools.org)

## Sunapee Middle High School (SMHS)

**Sean Moynihan, Principal**

10 North Road

Sunapee, NH 03782

603-763-5615

603-763-3055 (FAX)

[smoynihan@sunapeeschools.org](mailto:smoynihan@sunapeeschools.org)

**Sunapee School District Website:** [www.sau85.org](http://www.sau85.org)

**SMHS Athletics Website:** [www.sunapeeathletics.org](http://www.sunapeeathletics.org)

### Twitter Accounts:

@sunapeecentral - SCES

@SMHSOffice - SMHS

@sunapeesports - SMHS Sports

@sau85tech - District Technology News

@sunapeeschools - SAU Superintendent

**Find us on Facebook @SunapeeSchoolsSau85**

### Sunapee School Board Meetings:

First Wednesday of each month, 6PM